

### 36-1275: Monoclonal Antibody to IgG (Immunoglobulin Gamma Heavy Chain) (B-Cell Marker)(Clone : B33/20)

<b>Clonality :</b>	Monoclonal
<b>Clone Name :</b>	B33/20
<b>Application :</b>	FACS,IF,IHC
<b>Reactivity :</b>	Human
<b>Gene :</b>	IGHG1
<b>Uniprot ID :</b>	P01857
<b>Format :</b>	Purified
<b>Alternative Name :</b>	IGHG1
<b>Isotype :</b>	Mouse IgG1, kappa
<b>Immunogen Information :</b>	Purified polyclonal human Ig Gamma Chain

#### Description

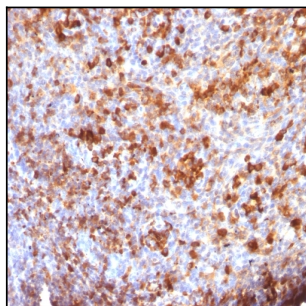
Recognizes a protein of 75kDa, identified as  $\gamma$  heavy chain of human immunoglobulins. Its epitope maps in CH2 domain of Fc region of IgG. It reacts with all sub-classes of  $\gamma$  chain of human immunoglobulins. It does not cross-react with  $\alpha$  (IgA),  $\mu$  (IgM),  $\epsilon$  (IgE), or  $\delta$  (IgD), heavy chains, T-cells, monocytes, granulocytes, or erythrocytes. This MAb is useful in the identification of leukemias, plasmacytomas, and certain non-Hodgkin's lymphomas. The most common feature of these malignancies is the restricted expression of a single heavy chain class. Demonstration of clonality in lymphoid infiltrates indicates that the infiltrate is clonal and therefore malignant.

#### Product Info

<b>Amount :</b>	100 $\mu$ g
<b>Purification :</b>	Affinity Chromatography
<b>Content :</b>	100 $\mu$ g in 500 $\mu$ l PBS containing 0.05% BSA and 0.05% sodium azide. Sodium azide is highly toxic.
<b>Storage condition :</b>	Store the antibody at 4°C; stable for 6 months. For long-term storage; store at -20°C. Avoid repeated freeze and thaw cycles.

#### Application Note

Flow Cytometry (1-2ug/million cells); Immunofluorescence (1-2ug/ml); Immunohistochemistry (Formalin/paraffin) (1-2ug/ml for 30 minutes at RT)(Staining of formalin-fixed tissues requires heating tissue sections in 10mM Tris with 1mM EDTA, pH 9.0, for 45 min at 95°C followed by cooling at RT for 20 minutes);



Formalin-fixed, paraffin-embedded human Tonsil stained with IgG Monoclonal Antibody (B33/20)