

36-1347: Monoclonal Antibody to Cytokeratin 7 (KRT7) (Glandular and Transitional Epithelial Marker)(Clone : KRT7/903)

| | |
|-------------------------|--|
| Clonality : | Monoclonal |
| Clone Name : | KRT7/903 |
| Application : | FACS,IF,IHC |
| Reactivity : | Human |
| Gene : | KRT7 |
| Gene ID : | 3855 |
| Uniprot ID : | P08729 |
| Format : | Purified |
| Alternative Name : | KRT7,SCL |
| Isotype : | Mouse IgG1, kappa |
| Immunogen Information : | Recombinant full-length human KRT7 protein |

Description

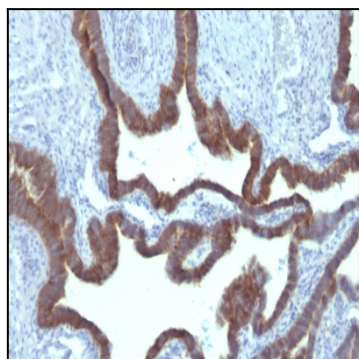
Cytokeratin 7 is a basic cytokeratin, which is found in most glandular and transitional epithelia but not in the stratified squamous epithelia. Keratin 7 is expressed in the epithelial cells of ovary, lung, and breast but not of colon, prostate, or gastrointestinal tract. Antibody to cytokeratin is useful in distinguishing ovarian carcinomas (keratin 7+) from colon carcinomas (keratin 7-).

Product Info

| | |
|---------------------|---|
| Amount : | 100 µg |
| Purification : | Affinity Chromatography |
| Content : | 100 µg in 500 µl PBS containing 0.05% BSA and 0.05% sodium azide. Sodium azide is highly toxic. |
| Storage condition : | Store the antibody at 4°C; stable for 6 months. For long-term storage; store at -20°C. Avoid repeated freeze and thaw cycles. |

Application Note

Flow Cytometry (1-2ug/million cells);Immunofluorescence (1-2ug/ml); Immunohistochemistry (Formalin-fixed) (1-2ug/ml for 30 minutes at RT)(Staining of formalin-fixed tissues requires heating tissue sections in 10mM Tris Buffer with 1mM EDTA, pH 9.0, for 45 min at 95°C followed by cooling at RT for 20 minutes)



Formalin-fixed, paraffin-embedded human Ovarian Carcinoma stained with Cytokeratin 7 Monoclonal Antibody (KRT7/903)