

## 10-4027: Monoclonal Antibody to IL-3RA (Clone: ABM25C1)

<b>Clonality :</b>	Monoclonal
<b>Clone Name :</b>	ABM25C1
<b>Application :</b>	FACS, WB
<b>Reactivity :</b>	Human
<b>Gene :</b>	IL3RA
<b>Gene ID :</b>	3563
<b>Uniprot ID :</b>	P26951
<b>Format :</b>	Purified
<b>Alternative Name :</b>	Interleukin-3 receptor subunit alpha, IL-3 receptor subunit alpha, CD123, IL-3R-alpha
<b>Isotype :</b>	Mouse IgG2b, Kappa
<b>Immunogen Information :</b>	A partial length recombinant protein (a.a 120-323) of IL-3RA was used as the immunogen for this antibody.

### Description

Interleukin-3 receptor subunit alpha (IL-3RA) or CD123 is a high-affinity receptor for interleukin-3 (IL-3), which along with the primary signaling common  $\beta$  ( $\beta c$ ) subunit (CD131) forms a heterodimer, enabling cell signaling. IL-3RA chain is a glycoprotein of 360 amino acid residues, composed by an extracellular domain of 287 amino acid residues, involving a predicted Ig-like domain, two Fn III domains, a transmembrane domain of 30 amino acid residues and by an intracellular domain of 53 residues. It is expressed on the majority of CD34+ hemopoietic progenitors and its expression is rapidly lost during erythroid and megakaryocytic differentiation, moderately decreased during monocytic differentiation and is sustained in the granulocytic lineage. IL-3RA is also expressed in a variety of hematological neoplasms including blastic plasmacytoid dendritic cell neoplasm (BPDCN), acute myeloid leukemia (AML), acute lymphoblastic leukemia (ALL), chronic myeloid leukemia (CML), Hodgkin's lymphoma and hairy cell leukemia.

### Product Info

<b>Amount :</b>	25 $\mu$ g / 100 $\mu$ g
<b>Purification :</b>	Protein G Chromatography
<b>Content :</b>	25 $\mu$ g in 50 $\mu$ l/100 $\mu$ g in 200 $\mu$ l PBS containing 0.05% BSA and 0.05% sodium azide. Sodium azide is highly toxic.
<b>Storage condition :</b>	Store the antibody at 4°C, stable for 6 months. For long-term storage, store at -20°C. Avoid repeated freeze and thaw cycles.

### Application Note

WB: 6-8  $\mu$ g/ml, FACS: 0.5-1  $\mu$ g/10<sup>6</sup>

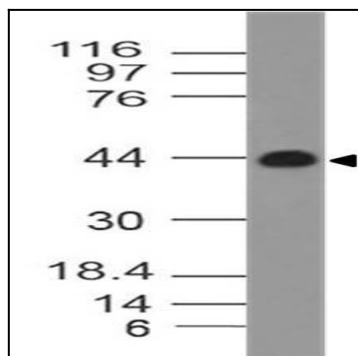


Fig-1: Western blot analysis of IL-3RA. Anti-IL-3RA antibody (Clone: ABM25C1) was used at 6 µg/ml on hbrain lysate.

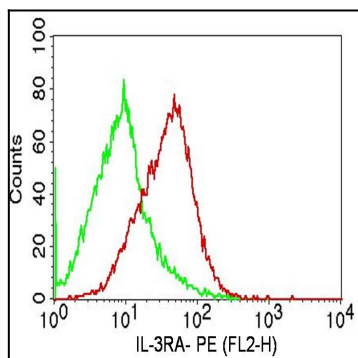


Fig-2: Cell surface flow analysis of human IL3-RA in PBMCs (lymphocytes gated) using 0.5 µg/10<sup>6</sup> cells of antibody (Clone: ABM25C1). Green represents isotype control; red represents anti-IL3 RA antibody. Goat anti-mouse PE conjugate was used as secondary antibody. (Cells were incubated with primary antibody for 45 min. then washed twice with PBS by centrifuging at 1100 rpm for 5 min, followed by 30 min incubation with conjugated secondary antibody. Data acquisition was done after washing twice with PBS as mentioned above).