

10-7602: Monoclonal Antibody to VWF (Clone: ABM53D2)

Clonality :	Monoclonal
Clone Name :	ABM53D2
Application :	FACS, WB
Reactivity :	Human
Gene :	VWF
Gene ID :	7450
Uniprot ID :	P04275
Format :	Purified
Alternative Name :	von Willebrand Factor
Isotype :	Mouse IgG1, kappa
Immunogen Information :	A partial length recombinant protein (a.a 1710-1939) of VWF was used as the immunogen for this antibody.

Description

VWF (von Willebrand factor), the macromolecular plasma glycoprotein named for its contribution to the hereditary bleeding disorder known as VWD (von Willebrand disease), functions as a key regulator of primary hemostasis. VWF multimers are large adhesive proteins that are essential to the initiation of hemostatic plugs at sites of vascular injury. The binding of VWF multimers to platelets, as well as VWF proteolysis, is regulated by shear stresses that alter VWF multimeric conformation. This protein is produced exclusively by endothelial cells and megakaryocytes. Following cleavage of the precursor prepro-VWF form, the mature VWF is stored in Weibel-Palade bodies until its release is stimulated by various secretagogues or pathological stimuli, including inflammatory factors.

Product Info

Amount :	25 µg / 100 µg
Purification :	Protein G Chromatography
Content :	25 µg in 50 µl/100 µg in 200 µl PBS containing 0.05% BSA and 0.05% sodium azide. Sodium azide is highly toxic.
Storage condition :	Store the antibody at 4°C, stable for 6 months. For long-term storage, store at -20°C. Avoid repeated freeze and thaw cycles.

Application Note

WB: 2-4 µg/ml, FACS: 0.5-1 µg/10⁶

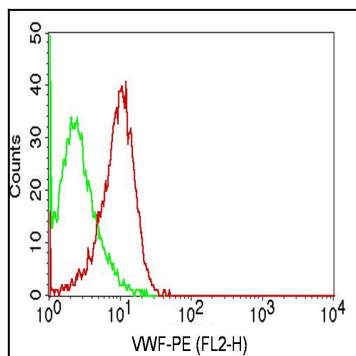


Fig-1: Intracellular flow analysis of VWF antibody on HepG2 cells using 0.5 $\mu\text{g}/10^6$ cells of antibody (Clone: ABM53D2). Green represents isotype control; red represents anti-VWF antibody. Goat anti-mouse PE conjugate was used as secondary antibody. (Cells were fixed with 4% paraformaldehyde for 10 min and washed with PBS by centrifuging at 1100 for 5 min followed by permeabilization for 20 min and washed again as mentioned above. Then cell were incubated with primary antibody for 45 min. and after washing the cells twice in PBS, incubated with conjugated secondary antibody for 30 min. Data acquisition was done after washing twice with PBS as mentioned above).

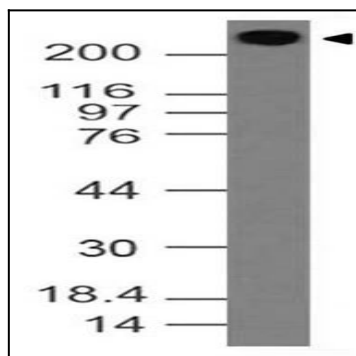


Fig-2: Western blot analysis of VWF. Anti-VWF antibody (Clone : ABM53D2) was used at 2 $\mu\text{g}/\text{ml}$ on h Lungs lysate.