

11-3024: Polyclonal Antibody to NALP3/CIAS1/Cryopyrin/PYPAF1

Clonality :	Polyclonal
Application :	WB
Reactivity :	Human
Gene :	NLRP3
Gene ID :	114548
Uniprot ID :	Q96P20
Format :	Purified
Alternative Name :	NLRP3,C1orf7,CIAS1,NALP3,PYPAF1
Isotype :	Rabbit IgG
Immunogen Information :	A partial recombinant NALP3 protein (amino acids 1-200) was used as the immunogen for this antibody.

Description

NALP3 (NACHT, LRR and PYD domains-containing protein 3), otherwise known as cryopyrin, is a member of the NLR (Nod-like-receptors) family. This is a pyrin-like protein, having N-terminal CARD or pyrin domains needed for homotypic protein-protein interaction, an intermediate nucleotide binding self-oligomerization NACHT domain and a C-terminal domain containing leucine-rich repeats (LRRs). NALP3 is a key component of innate immunity and its expression is restricted to immune cells and chondrocytes. It interacts with the apoptosis-associated speck-like protein PYCARD/ASC, which contains a caspase recruitment domain, and is a member of the NALP3 inflammasome complex. This complex functions as an upstream activator of NF-kappa β signaling, and it plays an important role in the regulation of inflammation, the immune response, and apoptosis.

Product Info

Amount :	25 μ g / 100 μ g
Purification :	Protein A Chromatography
Content :	25 μ g in 50 μ l/100 μ g in 200 μ l PBS containing 0.05% BSA and 0.05% sodium azide. Sodium azide is highly toxic.
Storage condition :	Store the antibody at 4°C, stable for 6 months. For long-term storage, store at -20°C. Avoid repeated freeze and thaw cycles.

Application Note

Western blot analysis: 2-4 μ g/ml

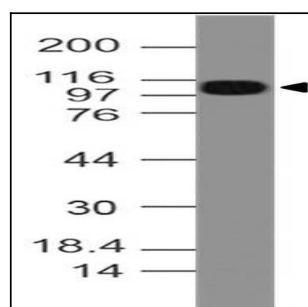


Fig-1: Western blot analysis of NALP3. Anti- NALP3 antibody (11-3024) was used at 4 μ g/ml on Ramos lysate.