

11-7569: Polyclonal Antibody to NSE gamma

| | |
|--------------------------------|--|
| Clonality : | Polyclonal |
| Application : | WB |
| Reactivity : | Human |
| Gene : | ENO2 |
| Gene ID : | 2026 |
| Uniprot ID : | P09104 |
| Format : | Purified |
| Alternative Name : | ENO2, 2-phospho-D-glycerate hydro-lyase, Enolase 2, Neural enolase |
| Isotype : | Rabbit IgG |
| Immunogen Information : | A partial length recombinant protein from C terminal portion of h NSE Gamma was used as the immunogen for this antibody. |

Product Info

| | |
|----------------------------|---|
| Amount : | 25 µg / 100 µg |
| Purification : | Protein A Chromatography |
| Content : | 25 µg in 50 µl/100 µg in 200 µl PBS containing 0.05% BSA and 0.05% sodium azide. Sodium azide is highly toxic. |
| Storage condition : | Store the antibody at 4°C, stable for 6 months. For long-term storage, store at -20°C. Avoid repeated freeze and thaw cycles. |

Application Note

Western blot analysis: 0.5-1 µg/ml

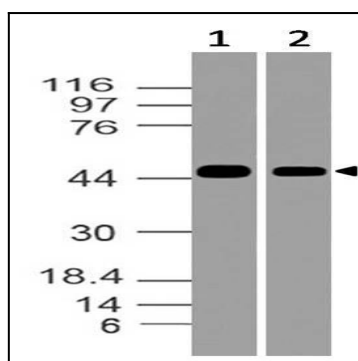


Fig-1: Western blot analysis of NSE gamma. Anti-NSE gamma antibody (11-7569) was used at 0.5 µg/ml on (1) h Brain and (2) HepG2 lysates.