

## 10-4108: Monoclonal Antibody to hCD80 (Clone: ABM40G8)

|                                |  |
|--------------------------------|--|
| <b>Clonality :</b>             | Monoclonal   |
| <b>Clone Name :</b>            | ABM40G8  |
| <b>Application :</b>           | FACS, WB   |
| <b>Reactivity :</b>            | Human  |
| <b>Gene :</b>                  | CD80   |
| <b>Gene ID :</b>               | 941  |
| <b>Uniprot ID :</b>            | P33681   |
| <b>Format :</b>                | Purified   |
| <b>Alternative Name :</b>      | T-lymphocyte activation antigen CD80, Activation B7-1 antigen, BB1, CTLA-4 counter-receptor B7.1, B7       |
| <b>Isotype :</b>               | Mouse IgG2b, Kappa   |
| <b>Immunogen Information :</b> | A partial length recombinant CD80 protein (amino acid 48-261) was used as the immunogen for this antibody. |

### Product Info

|                            |   |
|----------------------------|---|
| <b>Amount :</b>            | g / 100 µg  |
| <b>Purification :</b>      | Protein G Chromatography  |
| <b>Content :</b>           | 25 µg in 50 µl/100 µg in 200 µl PBS containing 0.05% BSA and 0.05% sodium azide. Sodium azide is highly toxic.                |
| <b>Storage condition :</b> | Store the antibody at 4°C, stable for 6 months. For long-term storage, store at -20°C. Avoid repeated freeze and thaw cycles. |

### Application Note

WB: 4-6 µg/ml, Flowcytometry analysis: 2-4 µg/10<sup>6</sup> Cells

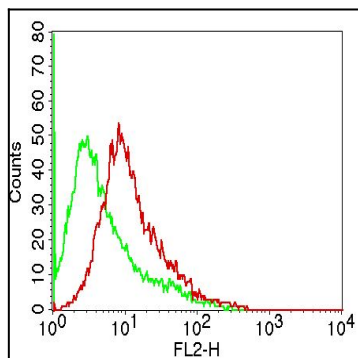


Fig-1: Cell surface flowcytometry analysis of CD80 antibody in Raji cells using 2 µg 10<sup>6</sup> cells of Anti human CD80 (Clone:ABM40G8 ). Green represent isotype control and red represent Anti- CD80 antibody (ABEOMICS 10-4108). Goat anti-mouse PE conjugated was used as the secondary antibody.

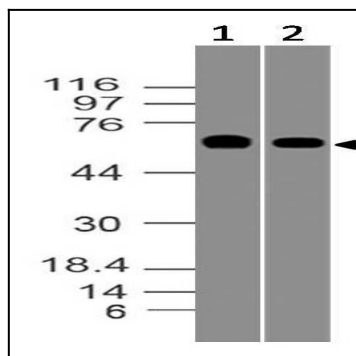


Fig-2: Western blot analysis of hCD80. Anti-hCD80 antibody (Clone: ABM40G8) was used at 2 µg/ml on Raji and Ramos lysates.