

10-4131: Monoclonal Antibody to hCD10 (Clone: CB-CALLA)

Clonality :	Monoclonal
Clone Name :	CB-CALLA
Application :	FACS
Reactivity :	Human
Gene :	MME
Gene ID :	4311
Uniprot ID :	P08473
Format :	Purified
Alternative Name :	Neprilysin, Atrialopeptidase, Common acute lymphocytic leukemia antigen, Enkephalinase, Neutral endopeptidase 24.11, Skin fibroblast elastase, SFE
Isotype :	Mouse IgG2b Kappa
Immunogen Information :	Full length recombinant protein of human CD10 was used as immunogen for this antibody.

Product Info

Amount :	25 µg / 100 µg
Purification :	Protein G Chromatography
Content :	25 µg in 50 µl/100 µg in 200 µl PBS containing 0.05% BSA and 0.05% sodium azide. Sodium azide is highly toxic.
Storage condition :	Store the antibody at 4°C, stable for 6 months. For long-term storage, store at -20°C. Avoid repeated freeze and thaw cycles.

Application Note

FACS: 1-2 µg/10⁶ cells

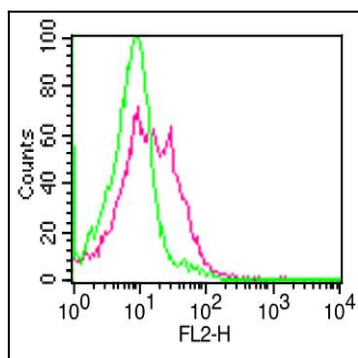


Figure-1: Cell Surface flow analysis of hCD10 in PBMC (Lymphocyte gated) using 1 µg/10⁶ cells. Green represents isotype control (ABEOMICS); red represents anti-CD10 antibody (10-4131, clone:CB-CALLA). Goat anti-mouse PE conjugated secondary antibody (ABEOMICS) was used.