

36-1451: Monoclonal Antibody to MUC1 / EMA / CD227 (Epithelial Marker)(GP1.4 + E29)

Clonality :	Monoclonal
Clone Name :	GP1.4 + E29
Application :	IHC
Reactivity :	Human
Gene :	MUC1
Gene ID :	4582
Uniprot ID :	P15941
Format :	Purified
Alternative Name :	MUC1,PUM
Isotype :	Mouse IgG1, kappa + Mouse IgG2a, lambda
Immunogen Information :	Human milk fat globule membranes (GP1.4); Delipidated extract of human milk fat globule membranes (E29)

Description

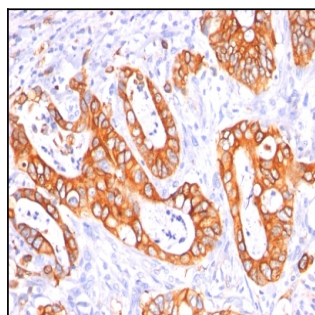
In Western blotting, it recognizes proteins in MW range of 265-400kDa, identified as different glycoforms of EMA. The α subunit has cell adhesive properties. It can act both as an adhesion and an anti-adhesion protein. EMA may provide a protective layer on epithelial cells against bacterial and enzyme attack. The β subunit contains a C-terminal domain, which is involved in cell signaling, through phosphorylations and protein-protein interactions. In immunohistochemical assays, it superbly stains routine formalin/paraffin carcinoma tissues. Antibody to EMA is useful as a pan-epithelial marker for detecting early metastatic loci of carcinoma in bone marrow or liver.

Product Info

Amount :	100 μ g
Purification :	Affinity Chromatography
Content :	100 μ g in 500 μ l PBS containing 0.05% BSA and 0.05% sodium azide. Sodium azide is highly toxic.
Storage condition :	Store the antibody at 4°C; stable for 6 months. For long-term storage; store at -20°C. Avoid repeated freeze and thaw cycles.

Application Note

Immunohistochemistry (Formalin-fixed) (1-2 μ g/ml for 30 min at RT)(Staining of formalin-fixed tissues requires heating tissue sections in 10mM Tris with 1mM EDTA, pH 9.0, for 45 min at 95°C followed by cooling at RT for 20 minutes);



Formalin-fixed, paraffin-embedded human Colon Carcinoma stained with MUC-1 / EMA Monoclonal Antibody (GP1.4 + E29).