

## 10-4145: Monoclonal Antibody to hCD11a (Clone: DF1524)

|                                |   |
|--------------------------------|---|
| <b>Clonality :</b>             | Monoclonal  |
| <b>Clone Name :</b>            | DF1524  |
| <b>Application :</b>           | FACS  |
| <b>Reactivity :</b>            | Human   |
| <b>Gene :</b>                  | ITGAL   |
| <b>Gene ID :</b>               | 3683  |
| <b>Uniprot ID :</b>            | P20701  |
| <b>Format :</b>                | Purified  |
| <b>Alternative Name :</b>      | Integrin alpha-L, CD11 antigen-like family member A, Leukocyte adhesion glycoprotein LFA-1 alpha chain, Leukocyte function-associated molecule 1 alpha chain, CD11a |
| <b>Isotype :</b>               | Mouse IgG1 Kappa  |
| <b>Immunogen Information :</b> | full length Recombinant protein of human CD11a was used as immunogen for this antibody.   |

### Product Info

|                            |   |
|----------------------------|---|
| <b>Amount :</b>            | 25 µg / 100 µg  |
| <b>Purification :</b>      | Protein G Chromatography  |
| <b>Content :</b>           | 25 µg in 50 µl/100 µg in 200 µl PBS containing 0.05% BSA and 0.05% sodium azide. Sodium azide is highly toxic.                |
| <b>Storage condition :</b> | Store the antibody at 4°C, stable for 6 months. For long-term storage, store at -20°C. Avoid repeated freeze and thaw cycles. |

### Application Note

FACS: 0.5-1 µg/10<sup>6</sup> cells

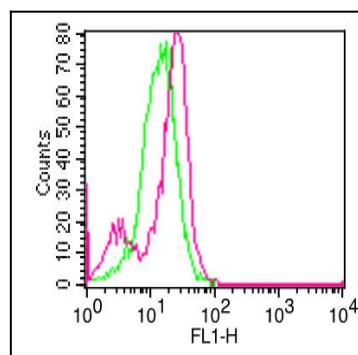


Fig-1: Cell Surface flow analysis of hCD11a in PBMC (Monocyte gated) using 0.5 µg/10<sup>6</sup> cells. Green represents isotype control (ABEOMICS); red represents anti-hCD11a antibody (10-4145). Goat anti-mouse FITC conjugated secondary antibody (ABEOMICS) was used.