

## 10-4038: Monoclonal Antibody to hIL-1beta (Clone: ABM2C64)

|                                |   |
|--------------------------------|---|
| <b>Clonality :</b>             | Monoclonal  |
| <b>Clone Name :</b>            | ABM2C64   |
| <b>Application :</b>           | ELISA,FACS,WB   |
| <b>Reactivity :</b>            | Human   |
| <b>Gene :</b>                  | IL1B  |
| <b>Gene ID :</b>               | 3553  |
| <b>Uniprot ID :</b>            | P01584  |
| <b>Format :</b>                | Purified  |
| <b>Alternative Name :</b>      | Interleukin-1 beta,Catabolin  |
| <b>Isotype :</b>               | Mouse IgG1 Kappa  |
| <b>Immunogen Information :</b> | Full-length recombinant human IL-1beta protein was used as immunogen for this antibody. |

### Product Info

|                            |   |
|----------------------------|---|
| <b>Amount :</b>            | 25 µg / 100 µg  |
| <b>Purification :</b>      | Protein G Chromatography  |
| <b>Content :</b>           | 25 µg in 50 µl/100 µg in 200 µl PBS containing 0.05% BSA and 0.05% sodium azide. Sodium azide is highly toxic.                |
| <b>Storage condition :</b> | Store the antibody at 4°C, stable for 6 months. For long-term storage, store at -20°C. Avoid repeated freeze and thaw cycles. |

### Application Note

ELISA, Western blot analysis: 4-6 µg/ml, FACS: 0.5-1 µg/10<sup>6</sup>

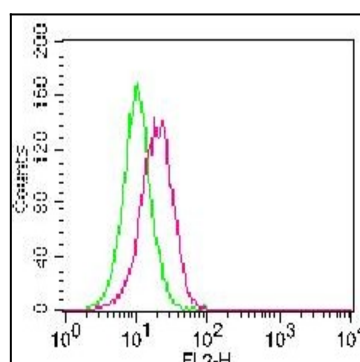


Figure-1: Intracellular staining of hIL-1beta in THP1 and THP1 treated with LPS using 0.5 µg/10<sup>6</sup> cells of Anti-human IL-1 beta (Clone: ABM2C64) antibody. Green represents THP1 and Red represents THP1 treated with LPS.

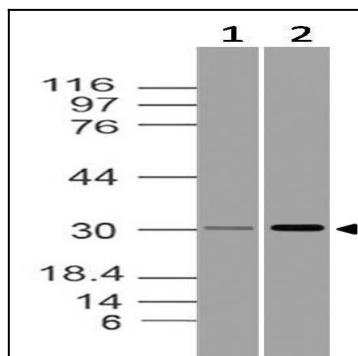


Figure-2: Western blot analysis of hIL-1beta. Anti-hIL-1beta antibody (Clone: ABM2C64) was tested at 4 µg/ml on (1) THP1 and (2) THP1 treated with LPS lysates.