

10-2001: Recombinant antibody to PD1

Clonality : Monoclonal
Clone Name : ABMRR01
Application : FACS, WB
Reactivity : Human
Gene : PDCD1
Gene ID : 5133
Uniprot ID : Q15116
Format : Purified
Alternative Name : PDCD1, PD1, CD279
Isotype : Rabbit IgG

Product Info

Amount : 25 µg / 100 µg
Purification : Protein A Chromatography
Content : 100 µg in 200 µl PBS containing 0.05% BSA and 0.05% sodium azide. Sodium azide is highly toxic.
Storage condition : Store the antibody at 4°C, stable for 6 months. For long-term storage, store at -20°C. Avoid repeated freeze and thaw cycles.

Application Note

FACS: 0.5-1 µg/10⁶, WB: 1-2 µg/ml

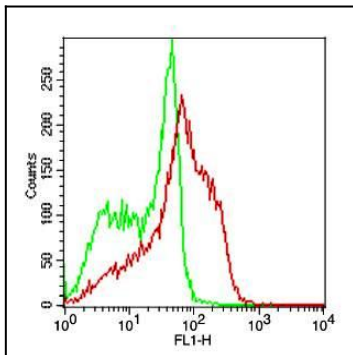


Fig-1: Cell surface flow analysis of Rabbit recombinant hPD-1 antibody in PHA treated PBMC (Lymphocyte gated) using 0.5 µg/10⁶ cells of Rabbit recombinant hPD-1 antibody (Clone:ABMRR01). Green represent isotype control and red represent Rabbit recombinant hPD-1 antibody. Goat anti rabbit FITC conjugate was used as secondary antibody.

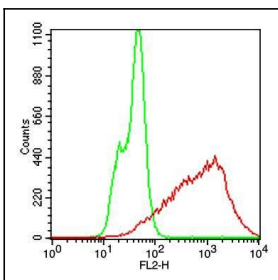


Fig-2: Cell surface flow analysis of Rabbit recombinant hPD-1 antibody in CHO-PD1 transfected cell line using 0.2 µg/10⁶ cells of Rabbit recombinant hPD-1 antibody (Clone: ABMRR01). Green represent CHO/K1 cells and red represent Rabbit recombinant hPD-1 antibody. Goat anti rabbit PE conjugate was used as secondary antibody.

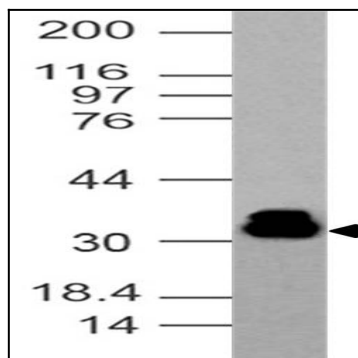


Fig-3: Western blot analysis of Rabbit recombinant hPD-1 antibody. Anti-Rabbit recombinant hPD-1 antibody was tested at 1 μ g/ml in Jurkat cell lysate