

## 10-4177: Monoclonal Antibody to HLA-DP (Clone:ABM54B6)

<b>Clonality :</b>	Monoclonal
<b>Clone Name :</b>	ABM54B6
<b>Application :</b>	FACS
<b>Reactivity :</b>	Human
<b>Gene :</b>	HLA-DPA1
<b>Gene ID :</b>	3113
<b>Uniprot ID :</b>	P20036
<b>Format :</b>	Purified
<b>Alternative Name :</b>	DP(W3), DP(W4), HLA-SB alpha chain, MHC class II DP3-alpha, MHC class II DPA1, HLA-DP1A, HLASB
<b>Isotype :</b>	Mouse IgG2b

### Product Info

<b>Amount :</b>	25 µg / 100 µg
<b>Purification :</b>	Protein G Chromatography
<b>Content :</b>	100 µg in 200 µl PBS containing 0.05% BSA and 0.05% sodium azide. Sodium azide is highly toxic.
<b>Storage condition :</b>	Store the antibody at 4°C, stable for 6 months. For long-term storage, store at -20°C. Avoid repeated freeze and thaw cycles.

### Application Note

FACS: 0.5-1 µg/10<sup>6</sup>

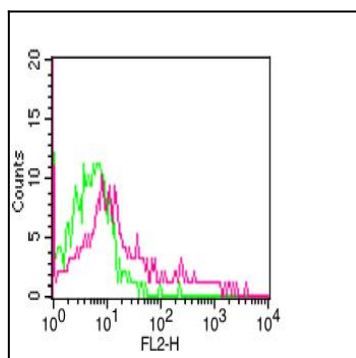


Fig-1: Cell surface flowcytometric staining of HLA-DP in hPBMC using 0.5 µg/ 10<sup>6</sup> cells of Anti-hHLA-DP (Clone:ABM54B6). Green represents isotype control; red represents anti-HLA-DP antibody. Goat anti-mouse PE conjugate was used as secondary antibody.