

## 10-6009: Monoclonal Antibody to p65 (Clone: ABM1A16)

<b>Clonality :</b>	Monoclonal
<b>Clone Name :</b>	ABM1A16
<b>Application :</b>	FACS
<b>Reactivity :</b>	Human
<b>Gene :</b>	RELA
<b>Gene ID :</b>	5970
<b>Uniprot ID :</b>	Q04206
<b>Format :</b>	Purified
<b>Alternative Name :</b>	Transcription factor p65, Nuclear factor NF-kappa-B p65 subunit, Nuclear factor of kappa light polypeptide gene enhancer in B-cells 3
<b>Isotype :</b>	Mouse IgG1 Kappa
<b>Immunogen Information :</b>	A partial length recombinant P65 protein (amino acid 346- 552) was used as immunogen for this antibody.

### Product Info

<b>Amount :</b>	25 µg / 100 µg
<b>Purification :</b>	Protein G Chromatography
<b>Content :</b>	100 µg in 200 µl PBS containing 0.05% BSA and 0.05% sodium azide. Sodium azide is highly toxic.
<b>Storage condition :</b>	Store the antibody at 4°C, stable for 6 months. For long-term storage, store at -20°C. Avoid repeated freeze and thaw cycles.

### Application Note

FACS: 1-2 µg/ml

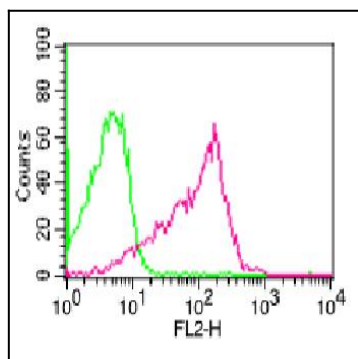


Figure-1: Intra cellular Flow analysis of P65 in human PBMC using 0.5 µg/10<sup>6</sup> cells of P65 antibody (Clone: ABM1A16). Green represents isotype control; red represents anti-P65 antibody. Goat anti-mouse PE conjugate was used as secondary antibody.