

10-4089-NALE: Monoclonal Antibody to CD3 (Clone: OKT3)

| | |
|--------------------------------|--|
| Clonality : | Monoclonal |
| Clone Name : | OKT3 |
| Application : | FACS |
| Reactivity : | Human |
| Gene : | CD3D |
| Gene ID : | 915 |
| Uniprot ID : | P04234 |
| Format : | Azide Free, Purified |
| Alternative Name : | CD3D, T3D |
| Isotype : | Mouse IgG2a Kappa |
| Immunogen Information : | Human PBMCs were used as immunogen for the CD3 antibody. |

Description

CD3D is one of the several invariant chains that the variable chains of TCR: Alpha beta or Gamma delta TCR contains, and which support surface TCR expression and transduce the TCR signal. CD3D, along with four other CD3 subunits, binds either TCR alpha/beta or TCR gamma/delta to form the TCR/CD3 complex on the surface of T-cells. Defects in this gene are a cause of severe combined immunodeficiency autosomal recessive T-cell-negative/B-cell-positive/NK-cell-positive (SCIDBNK).

Product Info

| | |
|----------------------------|---|
| Amount : | 100 µg |
| Purification : | Protein G Chromatography |
| Content : | 25 µg in 50 µl/100 µg in 200 µl PBS containing No azide, low endotoxin (0.1EU/1ug). |
| Storage condition : | Store the antibody at 4°C, stable for 6 months. For long-term storage, store at -20°C. Avoid repeated freeze and thaw cycles. |

Application Note

FACS analysis: 0.1 µg/10⁶ cells

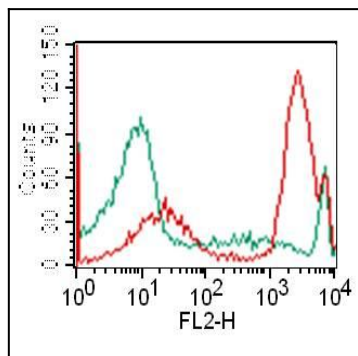


Fig-1: Cell Surface flow analysis of hCD3 in PBMC (Lymphocytes gated) using 0.1 µg/10⁶ cells. Green represents isotype control (ABEOMICS); red represents anti-hCD3 antibody (10-4089). Goat anti-mouse PE conjugated secondary antibody was used (ABEOMICS).