

10-7614: Monoclonal antibody to Msi-1 (Clone: ABM54B9)

Clonality :	Monoclonal
Clone Name :	ABM54B9
Application :	FACS, WB
Reactivity :	Human
Gene :	MSI1
Gene ID :	4440
Uniprot ID :	O43347
Format :	Purified
Alternative Name :	RNA-binding protein Musashi homolog 1, Musashi-1
Isotype :	Mouse IgG2b, Kappa
Immunogen Information :	A partial length recombinant protein of Msi-1 (amino acid 19-263) was used as the immunogen for this antibody.

Product Info

Amount :	25 µg / 100 µg
Purification :	Protein G Chromatography
Content :	25 µg in 50 µl/100 µg in 200 µl PBS containing 0.05% BSA and 0.05% sodium azide. Sodium azide is highly toxic.
Storage condition :	Store the antibody at 4°C; stable for 6 months. For long-term storage; store at -20°C. Avoid repeated freeze and thaw cycles

Application Note

Facs analysis: 2-4 µg/10⁶ Cells, Western blot analysis: 0.5-1 µg/ml

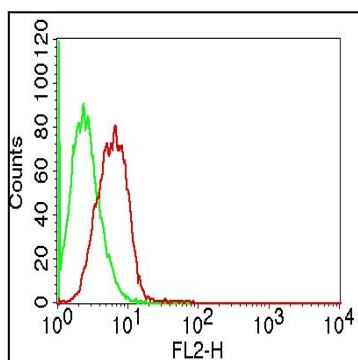


Figure:1-Intra cellular flow analysis of Msi-1 on HePG2 cells using 2 µg/10⁶ cells of Msi-1 antibody (Clone: ABM54B9). Green represents isotype control; red represents anti-Msi-1 antibody. Goat anti-mouse PE conjugate was used as secondary antibody.

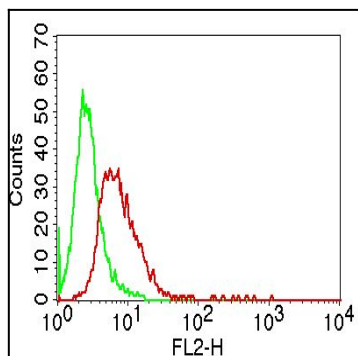


Figure:2-Intra cellular flow analysis of Msi-1 on HeLa cells using 2 $\mu\text{g}/10^6$ cells of Msi-1 antibody (Clone: ABM54B9). Green represents isotype control; red represents anti-Msi-1 antibody. Goat anti-mouse PE conjugate was used as secondary antibody.

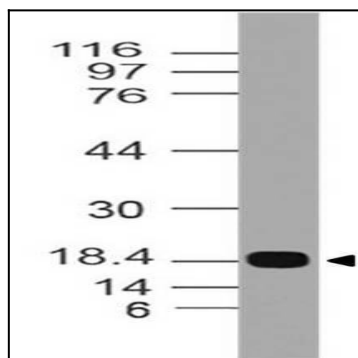


Figure:3- Western blot analysis of MSI-1. Anti- MSI-1 antibody (Clone: ABM54B9) was used at 0.5 $\mu\text{g}/\text{ml}$ on Recombinant protein.