

11-7036: Polyclonal Antibody to SETD7

Clonality :	Polyclonal
Application :	WB
Reactivity :	Human
Gene :	SETD7
Gene ID :	80854
Uniprot ID :	Q8WTS6
Format :	Purified
Alternative Name :	KIAA1717, KMT7, SET7, SET9
Isotype :	Rabbit IgG

Immunogen Information : A partial length recombinant SETD7 protein was used as the immunogen for this antibody.

Product Info

Amount :	25 µg / 100 µg
Purification :	Protein A Chromatography
Content :	25 µg in 50 µl/100 µg in 200 µl PBS containing 0.05% BSA and 0.05% sodium azide. Sodium azide is highly toxic.
Storage condition :	Store the antibody at 4°C, stable for 6 months. For long-term storage, store at -20°C. Avoid repeated freeze and thaw cycles.

Application Note

Western blot analysis: 4-6 µg/ml

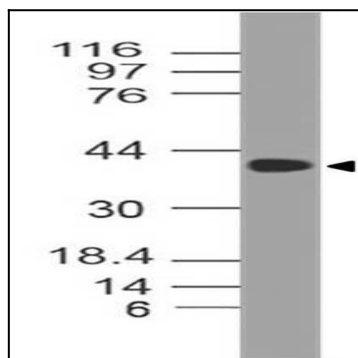


Figure-1: Western blot analysis of SETD7. Anti-SETD7 antibody (11-7036) was used at 4 µg/ml on Ramos lysate.