

## 10-4094: Monoclonal Antibody to CD38 (Clone: ABM37B4)

|                                |                                                                                                               |
|--------------------------------|---------------------------------------------------------------------------------------------------------------|
| <b>Clonality :</b>             | Monoclonal                                                                                                    |
| <b>Application :</b>           | WB                                                                                                            |
| <b>Reactivity :</b>            | Human                                                                                                         |
| <b>Gene :</b>                  | CD38                                                                                                          |
| <b>Gene ID :</b>               | 952                                                                                                           |
| <b>Uniprot ID :</b>            | P28907                                                                                                        |
| <b>Format :</b>                | Purified                                                                                                      |
| <b>Alternative Name :</b>      | T10, ADPRC 1, cADPr hydrolase 1, 2'-phospho-ADP-ribosyl cyclase                                               |
| <b>Isotype :</b>               | Mouse IgG2b                                                                                                   |
| <b>Immunogen Information :</b> | A partial length recombinant protein of CD38 (amino acid 60-280) was used as the immunogen for this antibody. |

### Product Info

|                            |                                                                                                                               |
|----------------------------|-------------------------------------------------------------------------------------------------------------------------------|
| <b>Amount :</b>            | 25 µg / 100 µg                                                                                                                |
| <b>Purification :</b>      | Protein G Chromatography                                                                                                      |
| <b>Content :</b>           | 25 µg in 50 µl/100 µg in 200 µl PBS containing 0.05% BSA and 0.05% sodium azide. Sodium azide is highly toxic.                |
| <b>Storage condition :</b> | Store the antibody at 4°C, stable for 6 months. For long-term storage, store at -20°C. Avoid repeated freeze and thaw cycles. |

### Application Note

Western blot analysis : 2-4 µg/ml

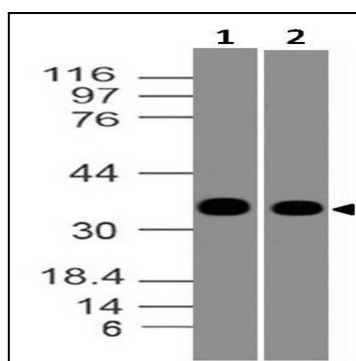


Figure-1: Western blot analysis of CD38. Anti- CD38 antibody (Clone: ABM37B4) was used at 1 µg/ml on (1) MOLT-4 and (2) Raji lysates.