

36-1637: Monoclonal Antibody to Cyclin D1 (G1-Cyclin & Mantle Cell Marker)(Clone : CCND1/809)

Clonality :	Monoclonal
Clone Name :	CCND1/809
Application :	FACS,IHC
Reactivity :	Human
Gene :	CCND1
Gene ID :	595
Uniprot ID :	P24385
Format :	Purified
Alternative Name :	CCND1,BCL1,PRAD1
Isotype :	Mouse IgG2a, kappa
Immunogen Information :	Recombinant human CCND1 protein

Description

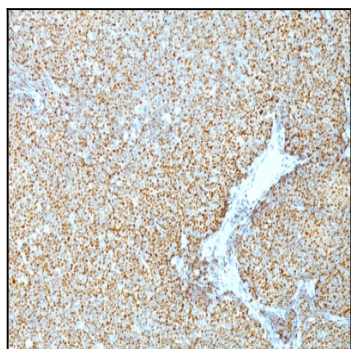
Recognizes a protein of 36kDa, identified as cyclin D1. Cyclin D1, one of the key cell cycle regulators, is a putative proto-oncogene overexpressed in a wide variety of human neoplasms. This antibody neutralizes the activity of cyclin D1 in vivo. About 60% of mantle cell lymphomas (MCL) contain a t(11; 14)(q13; q32) translocation resulting in over-expression of cyclin D1. This antibody is useful in identifying mantle cell lymphomas (cyclin D1 positive) from CLL/SLL and follicular lymphomas (cyclin D1 negative). Occasionally, hairy cell leukemia and plasma cell myeloma weakly express Cyclin D1.

Product Info

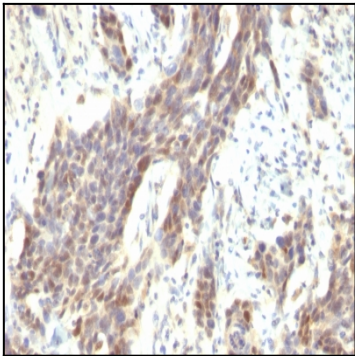
Amount :	100 µg
Purification :	Affinity Chromatography
Content :	100 µg in 500 µl PBS containing 0.05% BSA and 0.05% sodium azide. Sodium azide is highly toxic.
Storage condition :	Store the antibody at 4°C; stable for 6 months. For long-term storage; store at -20°C. Avoid repeated freeze and thaw cycles.

Application Note

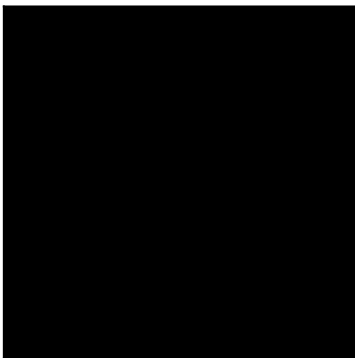
Flow Cytometry (1-2ug/million cells); Immunohistochemistry (Formalin-fixed) (1-2ug/ml for 30 minutes at RT)(Staining of formalin-fixed tissues requires heating tissue sections in 10mM Tris with 1mM EDTA, pH 9.0, for 45 min at 95°C followed by cooling at RT for 20 minutes);



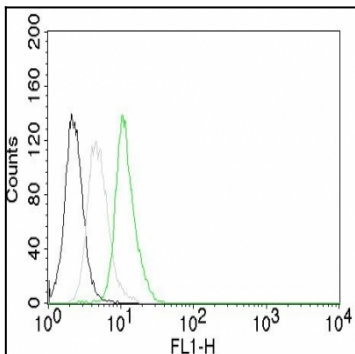
Formalin-fixed, paraffin-embedded human Mantle Cell Lymphoma stained with Cyclin D1 Monoclonal Antibody (CCND1/809).



Formalin-fixed, paraffin-embedded human Bladder Carcinoma stained with Cyclin D1 Monoclonal Antibody (CCND1/809).



Flow Cytometry of human Cyclin D1 on HeLa Cells. Black: Cells alone; Green: Isotype Control; Red: PE-labeled Cyclin D1 Monoclonal Antibody (CCND1/809).



Flow Cytometry of human Cyclin D1 on Jurkat Cells. Black: Cells alone; Grey: Isotype Control; Green: AF488-labeled Cyclin D1 Monoclonal Antibody (CCND1/809).