

### 36-1650: Monoclonal Antibody to Bcl-X (Apoptosis Marker)(Clone : SPM165)

<b>Clonality :</b>	Monoclonal
<b>Clone Name :</b>	SPM165
<b>Application :</b>	FACS,IF,WB,IHC
<b>Reactivity :</b>	Human, Mouse, Rat
<b>Gene :</b>	BCL2L1
<b>Gene ID :</b>	598
<b>Uniprot ID :</b>	Q07817
<b>Format :</b>	Purified
<b>Alternative Name :</b>	BCL2L1,BCL2L,BCLX
<b>Isotype :</b>	Mouse IgG2a, kappa
<b>Immunogen Information :</b>	A synthetic peptide, aa 3-14 (Cys-QSNRELVVDFLS) of human Bcl-X protein

#### Description

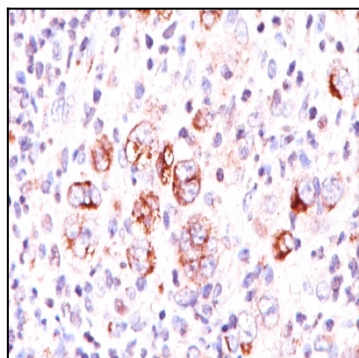
Recognizes a protein of 27kDa, identified as the Bcl-X protein. This MAb shows no cross-reaction with Bcl-2 or Bax protein. Bcl-X has two isoforms, Bcl-XL (long), a 241 amino acid protein which suppresses cell death. And Bcl-XS (short), a 178 amino acid protein lacking a 63 amino acid domain which functions as a dominant inhibitor of Bcl-2. This MAb reacts with both Bcl-XS and Bcl-XL proteins.

#### Product Info

<b>Amount :</b>	100 µg
<b>Purification :</b>	Affinity Chromatography
<b>Content :</b>	100 µg in 500 µl PBS containing 0.05% BSA and 0.05% sodium azide. Sodium azide is highly toxic.
<b>Storage condition :</b>	Store the antibody at 4°C; stable for 6 months. For long-term storage; store at -20°C. Avoid repeated freeze and thaw cycles.

#### Application Note

Flow Cytometry (1-2ug/million cells); Immunofluorescence (1-2ug/ml); Western Blot (1-2ug/ml); Immunohistochemistry (Formalin-fixed) (1-2ug/ml for 30 minutes at RT) (Staining of formalin-fixed tissues requires heating tissue sections in 1mM EDTA buffer, pH 7.5-8.5, for 45 min at 95°C followed by cooling at RT for 20 minutes)



Formalin-fixed, paraffin-embedded human Hodgkin's Lymphoma stained with Bcl-x Monoclonal Antibody (SPM165).