

## 36-1657: Monoclonal Antibody to Bcl-6 (Follicular Lymphoma Marker)(Clone : BCL6/850)(Discontinued)

<b>Clonality :</b>	Monoclonal
<b>Clone Name :</b>	BCL6/850
<b>Application :</b>	FACS,IF,IHC
<b>Gene :</b>	BCL6
<b>Gene ID :</b>	604
<b>Uniprot ID :</b>	P41182
<b>Format :</b>	Purified
<b>Alternative Name :</b>	BCL6,BCL5,LAZ3,ZBTB27,ZNF51
<b>Isotype :</b>	Mouse IgG1 Kappa
<b>Immunogen Information :</b>	Recombinant human bcl-6 protein

### Description

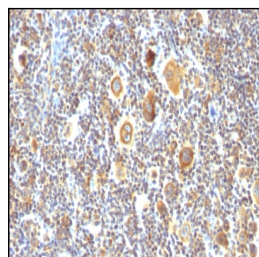
Recognizes a protein of 95kDa, which is identified as Bcl-6. Antibody to bcl-6 is helpful in a number of diagnostic settings: (1) In the differential diagnosis of small B-cell lymphoma. Follicular lymphoma will show bcl-6 (and CD10) positivity whereas other small B-cell lymphomas are usually negative. (2) Bcl-6 is an important prognostic marker in diffuse large B-cell lymphomas (DLBCL), where CD10, bcl-6 and MUM1/IRF4 are used to identify germinal center and activated B-cell phenotypes. (3) Bcl-6 can be valuable in distinguishing classical Hodgkin lymphoma from nodular lymphocyte predominant Hodgkin lymphoma (NLPHL). The Reed-Sternberg cells of classical Hodgkin lymphoma are bcl-6 negative whereas the large (?L&H?) cells of NLPHL are bcl-6 positive. In contrast, anti-Bcl-6 rarely stains mantle-cell lymphoma and MALT lymphoma.

### Product Info

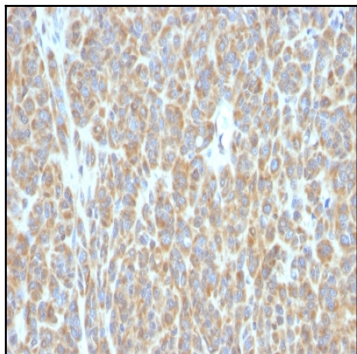
<b>Amount :</b>	100 µg
<b>Purification :</b>	Affinity Chromatography
<b>Content :</b>	100 µg in 500 µl PBS containing 0.05% BSA and 0.05% sodium azide. Sodium azide is highly toxic.
<b>Storage condition :</b>	Store the antibody at 4°C; stable for 6 months. For long-term storage; store at -20°C. Avoid repeated freeze and thaw cycles.

### Application Note

Flow Cytometry (0.5-1Âµg/million cells in 0.1ml); Immunofluorescence (1-2Âµg/ml); Immunohistochemistry (Formalin-fixed) (0.5-1Âµg/ml for 30 minutes at RT); (Staining of formalin-fixed tissues requires boiling tissue sections in 10mM Tris with 1mM EDTA, pH 9.0, for 10-20 min followed by cooling at RT for 20 minutes); Optimal dilution for a specific application should be determined.



Formalin-fixed, paraffin-embedded human Hodgkin's Lymphoma stained with bcl-6 Monoclonal Antibody (BCL6/850).



Formalin-fixed, paraffin-embedded human Melanoma stained with bcl-6 Monoclonal Antibody (BCL6/850).