

## 10-7557: Monoclonal Antibody to BCL-6 (Clone: ABM44G9)

<b>Clonality :</b>	Monoclonal
<b>Clone Name :</b>	ABM44G9
<b>Application :</b>	WB
<b>Reactivity :</b>	Human
<b>Gene :</b>	BCL6
<b>Gene ID :</b>	604
<b>Uniprot ID :</b>	P41182
<b>Format :</b>	Purified
<b>Alternative Name :</b>	BCL6,BCL5,LAZ3,ZBTB27,ZNF51
<b>Isotype :</b>	Mouse IgG2b Kappa
<b>Immunogen Information :</b>	A partial length recombinant BCL-6 protein (amino acids 200-401) was used as the immunogen for this antibody.

### Description

BCL6 (B-cell lymphoma 6) is a 95 kDa zinc finger transcription factor and contains an N-terminal POZ domain. BCL6 is a transcriptional repressor and a master regulator of the germinal center (GC) B cell phenotype controlling its development and growth. BCL-6 modulates IL-4, BCR, and CD40L signals for normal B cell development. Altered BCL6 protein expression is implicated in pathogenesis of diverse human hematologic malignancies, especially in the diffuse large B cell lymphoma (DLBCL), the most common lymphoma in adults. BCL6 suppresses the expression of p53 (also known as tp53) tumor suppressor gene and modulates DNA damage-induced apoptotic responses in GC B cells.

### Product Info

<b>Amount :</b>	25 µg / 100 µg
<b>Purification :</b>	Protein G Chromatography
<b>Content :</b>	25 µg in 50 µl/100 µg in 200 µl PBS containing 0.05% BSA and 0.05% sodium azide. Sodium azide is highly toxic.
<b>Storage condition :</b>	Store the antibody at 4°C, stable for 6 months. For long-term storage, store at -20°C. Avoid repeated freeze and thaw cycles.

### Application Note

Western blot analysis: 2-4 µg/ml

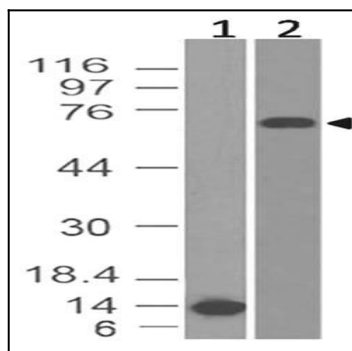


Fig-1: Western blot analysis of BCL-6. Anti- BCL-6 antibody (Clone: ABM44G9) was tested at 0.5 µg/ml and 2 µg/ml on (1) recombinant protein and (2) human brain lysates respectively