

### 36-11011: Monoclonal Antibody to Testosterone(Clone : 4E1G2)

<b>Clonality :</b>	Monoclonal
<b>Clone Name :</b>	4E1G2
<b>Application :</b>	ELISA, Radioimmunoassay, IHC
<b>Reactivity :</b>	All species
<b>Format :</b>	Purified
<b>Isotype :</b>	Mouse IgG1, kappa
<b>Immunogen Information :</b>	Testosterone 3 CMO conjugated to BSA

#### Description

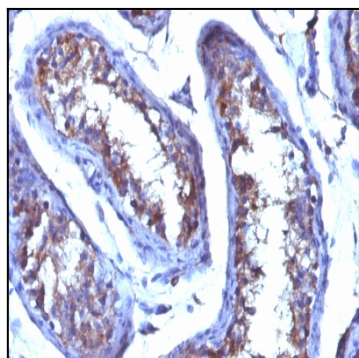
This MAb is highly specific to testosterone. Its affinity constant for testosterone is  $\sim 10^{10} \text{M}^{-1}$ . In competitive binding immunoassay, it reacts with testosterone 100%, 11-beta-hydroxy testosterone 3.3%, 17-alpha-methyl testosterone

#### Product Info

<b>Amount :</b>	100 $\mu\text{g}$
<b>Purification :</b>	Affinity Chromatography
<b>Content :</b>	100 $\mu\text{g}$ in 500 $\mu\text{l}$ PBS containing 0.05% BSA and 0.05% sodium azide. Sodium azide is highly toxic.
<b>Storage condition :</b>	Store the antibody at 4°C; stable for 6 months. For long-term storage; store at -20°C. Avoid repeated freeze and thaw cycles.

#### Application Note

ELISA (For coating, order Ab without BSA); Radioimmunoassay (RIA); Immunohistochemistry (Formalin-fixed) (0.25-0.5  $\mu\text{g}/\text{ml}$  for 30 minutes at RT) (Staining of formalin-fixed tissues requires heating tissue sections in 10mM Tris with 1mM EDTA, pH 9.0, for 45 min at 95°C followed by cooling at RT for 20 minutes);



Formalin-fixed. Paraffin-embedded human Testicular Carcinoma stained with Testosterone Monoclonal Antibody (4E1G2)