

36-11017: Monoclonal Antibody to Biotin (Vitamin B7 or Vitamin H)(Clone : Hyb-8)

| | |
|--------------------------------|-----------------------------------|
| Clonality : | Monoclonal |
| Clone Name : | Hyb-8 |
| Application : | FACS,IF,WB,IHC |
| Reactivity : | All species |
| Format : | Purified |
| Isotype : | Mouse IgG1, kappa |
| Immunogen Information : | Biotinylated sheep immunoglobulin |

Description

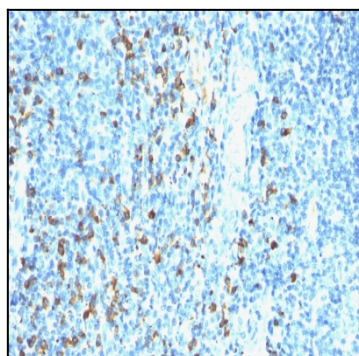
It recognizes both the free and protein-conjugated (either soluble or cell bound) form of biotin. This MAb is highly specific to biotin and shows no cross-reaction with other structurally related compounds. It has a very high affinity for biotin and is excellent for use in various amplification techniques. In some applications, localization of biotinylated probes with avidin produces unacceptably high background staining. Anti-biotin antibody may be substituted to decrease this noise.

Product Info

| | |
|----------------------------|---|
| Amount : | 100 µg |
| Purification : | Affinity Chromatography |
| Content : | 100 µg in 500 µl PBS containing 0.05% BSA and 0.05% sodium azide. Sodium azide is highly toxic. |
| Storage condition : | Store the antibody at 4°C; stable for 6 months. For long-term storage; store at -20°C. Avoid repeated freeze and thaw cycles. |

Application Note

Confocal Microscopy; In situ Nucleic Acid Hybridization; Flow Cytometry (0.5-1ug/million cells); ,Immunofluorescence (0.5-1ug/ml); Western Blot (0.5-2ug/ml); ,Immunohistochemistry (Formalin-fixed) (0.5-1ug/ml for 30 minutes at RT),(Staining of formalin-fixed tissues requires heating tissue sections in 10mM Tris with 1mM EDTA, pH 9.0, for 45 min at 95 °C followed by cooling at RT for 20 minutes),



Formalin-fixed, paraffin-embedded human Tonsil stained with biotinylated Lambda Light Chain probe followed by anti-biotin Monoclonal Antibody (Hyb-8).