

### **36-11024: Monoclonal Antibody to HCG Holo (Pregnancy & Choriocarcinoma Marker)(Clone : HCGab/52)**

<b>Clonality :</b>	Monoclonal
<b>Clone Name :</b>	HCGab/52
<b>Application :</b>	IHC
<b>Reactivity :</b>	Human
<b>Gene :</b>	CGA
<b>Gene ID :</b>	1081
<b>Uniprot ID :</b>	P01215
<b>Format :</b>	Purified
<b>Alternative Name :</b>	CGA
<b>Isotype :</b>	Mouse IgG1, kappa
<b>Immunogen Information :</b>	Purified hCG protein

#### **Description**

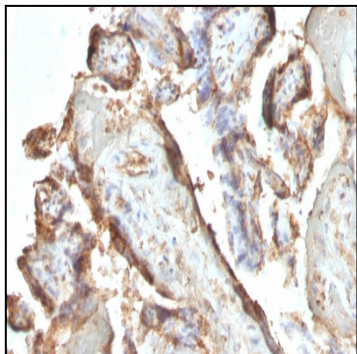
This MAb is a very special because it reacts ONLY with the intact-HCG and not with either free alpha- or free beta-chain of HCG. HCG is a glycoprotein and is composed of two non-identical, non-covalently linked polypeptide chains designated as the  $\alpha$  and  $\beta$  subunits. The  $\beta$  subunit is identical to that of thyroid stimulating hormone (TSH), follicle stimulating hormone (FSH), and luteinizing hormone (LH). HCG is secreted in large quantities by normal trophoblasts. It is present only in trace amounts in non-pregnant urine and sera but rises sharply during pregnancy. HCG MAb detects cells and tumors of trophoblastic origin such as choriocarcinoma. Large cell carcinoma and adenocarcinoma of the lung demonstrate anti-hCG positivity in 90% and 60% of cases respectively. 20% of lung squamous cell carcinomas are positive. HCG expression by non-trophoblastic tumors may indicate aggressive behavior.

#### **Product Info**

<b>Amount :</b>	100 $\mu$ g
<b>Purification :</b>	Affinity Chromatography
<b>Content :</b>	100 $\mu$ g in 500 $\mu$ l PBS containing 0.05% BSA and 0.05% sodium azide. Sodium azide is highly toxic.
<b>Storage condition :</b>	Store the antibody at 4°C; stable for 6 months. For long-term storage; store at -20°C. Avoid repeated freeze and thaw cycles.

#### **Application Note**

Immunohistochemistry (Formalin-fixed) (1-2 $\mu$ g/ml for 30 minutes at RT)(Staining of formalin-fixed tissues requires heating tissue sections in 10mM Tris with 1mM EDTA, pH 9.0, for 45 min at 95°C followed by cooling at RT for 20 minutes);



Formalin-fixed, paraffin-embedded human Placenta stained with hCG Monoclonal Antibody (HCGab/52).