

36-3011: Monoclonal Antibody to Kappa (Clone: L1C1)

Clonality :	Monoclonal
Clone Name :	L1C1
Application :	WB, IHC-P
Reactivity :	Human
Gene :	IGKV1D-16
Uniprot ID :	P01601
Format :	Purified
Alternative Name :	IGKV1D-16
Isotype :	Mouse IgG1, kappa
Immunogen Information :	B lymphoma cells are used as immunogen for this antibody.

Description

The kappa light chain antibody recognizes the kappa light chain of immunoglobulin. The kappa light chain itself is one of the two small polypeptide subunits of an antibody, the other being lambda. Antibodies are produced by the B-cells in lymphoid tissue. Each B lymphocyte expresses either lambda or kappa light chain but never both together. Hence, the kappa light chain antibody is a useful marker for identifying B lymphocytes expressing kappa light chain.

Product Info

Amount :	100 µg
Purification :	Protein G Chromatography
Content :	25 µg in 50 µl/100 µg in 200 µl PBS containing 0.05% BSA and 0.05% sodium azide. Sodium azide is highly toxic.
Storage condition :	Store the antibody at 4°C; stable for 6 months. For long-term storage; store at -20°C. Avoid repeated freeze and thaw cycles.

Application Note

Western Blot (1-2ug/ml), Immunohistochemistry (Formalin-fixed) (1-2ug/ml for 30 min at RT)(Staining of formalin-fixed tissues requires heating tissue sections in 10mM Tris with 1mM EDTA, pH 9.0, for 45 min at 95°C followed by cooling at RT for 20 minutes)

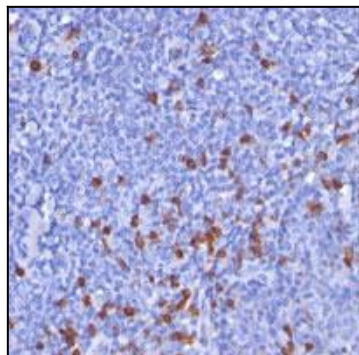


Figure-1: Immunohistochemical analysis of kappa in human tonsil using kappa antibody (Clone: L1C1) at 1:400 dilution.

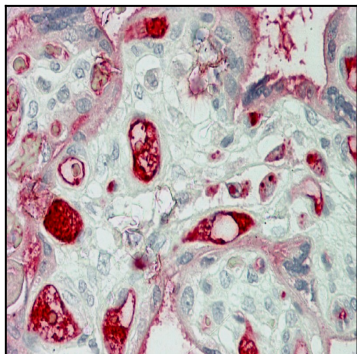


Figure-2: Immunohistochemical analysis of kappa in human Placenta tissue using kappa antibody (Clone: L1C1) at 10 µg/ml.

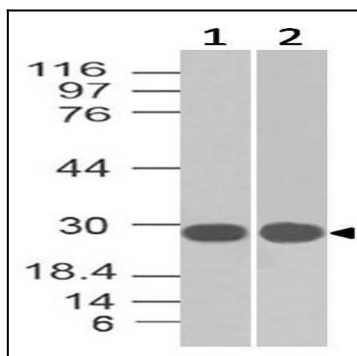


Figure-3: Western blot analysis of Kappa. Anti-Kappa antibody (Clone: L1C1) was tested at 0.1 µg/ml on (1) h Spleen and (2) h Kidney lysates.