

10-7589: Monoclonal antibody to LAMP1 (Clone: ABM5F15)

Clonality :	Monoclonal
Clone Name :	ABM5F15
Application :	WB,IF
Reactivity :	Human
Gene :	LAMP1
Gene ID :	3916
Uniprot ID :	P11279
Format :	Purified
Alternative Name :	LAMP1
Isotype :	Mouse IgG2b Kappa
Immunogen Information :	A partial length recombinant protein from C terminal portion of LAMP1 was used as the immunogen for this antibody.

Description

LAMP1 (Lysosomal-Associated Membrane Protein-1) is among the most abundant lysosomal membrane proteins being a heavily glycosylated protein creating a sugar coat or glycocalyx on the inner side of the lysosomal membrane aiding to the protection of the membrane from the hydrolytic enzymes and degradation. LAMP1 is expressed mainly in the endosome-lysosomal membrane of cells but has also been found in the plasma membrane (1-2% of total LAMP1). It has been found on the cell surface of highly metastatic tumor cells and especially metastatic colon cancer cells showed a high expression of LAMP1 compared to cancer cells with low metastatic potential, suggesting a role for LAMP1 in cell-cell adhesion and migration. LAMP1 is widely used as a marker for the identification of NK-cell degranulation, as it appears on the cell surface following the fusion of lysosomes with the plasma membrane, the role of LAMP1 in NK-cell biology is unknown.

Product Info

Amount :	25 µg / 100 µg
Purification :	Protein G Chromatography
Content :	25 µg in 50 µl/100 µg in 200 µl PBS containing 0.05% BSA and 0.05% sodium azide. Sodium azide is highly toxic.
Storage condition :	Store the antibody at 4°C; stable for 6 months. For long-term storage; store at -20°C. Avoid repeated freeze and thaw cycles.

Application Note

Western blot analysis: 2-4 µg/ml

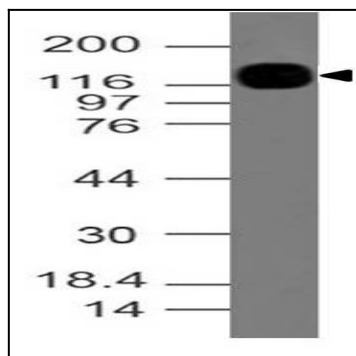


Fig:1- Expression analysis of LAMP1. Anti- LAMP1 antibody (Clone: ABM5F15) was tested at 2 µg/ml on U937 lysate.