

10-3015-F: Monoclonal antibody to TLR7 (Clone: ABM2C27)-FITC Conjugated

Clonality :	Monoclonal
Clone Name :	ABM2C27
Application :	FACS
Reactivity :	Human
Conjugate :	FITC
Gene :	TLR7
Gene ID :	51284
Uniprot ID :	Q9NYK1
Format :	Purified
Alternative Name :	TLR7, UNQ248/PRO285
Isotype :	Mouse IgG1 Kappa
Immunogen Information :	A partial length recombinant human TLR7 protein (amino acids 500-900) was used as the immunogen for this antibody.

Description

TLR7 (Toll-like receptor 7) is a member of the Toll-like receptor (TLR) family. TLR7 is a nucleotide-sensing TLR which is activated by single-stranded RNA; which plays a fundamental role in pathogen recognition and activation of innate immunity. TLR7 controls host immune response against pathogens through recognition of molecular patterns specific to microorganisms. TLR7 interacts with MYD88 via their respective TIR domains and also interacts with UNC93B1. Post-translational modifications and glycosylation occur in TLR7. TLR7 detected in brain, placenta, spleen, stomach, small intestine, lungs and plasmacytoid pre-dendritic cells.

Product Info

Amount :	25 µg / 100 µg
Purification :	Protein G Chromatography
Content :	0.2 mg/ml in Tris buffer containing 0.05% Azide
Storage condition :	Store the antibody at 4°C; stable for 6 months.

Application Note

FACS Analysis: 0.5-1 µg/10⁶ cells

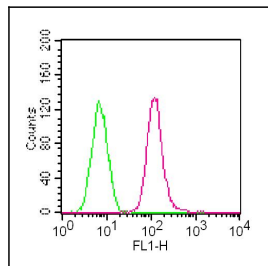


Fig:1- Intracellular flow analysis of TLR7-FITC conjugated in THP1 cells using 0.5 µg/10⁶ cells of TLR7-FITC antibody (Clone: ABM2C27). Green represents isotype control; red represents anti- TLR7-FITC antibody.