

16-2046: Normal organs of adult female monkey, perfusion fixation

Application : IHC

Description

Core diameter: 2.0 mm

Section thickness: 4 micrometer

Slide orientation:

In most of the slides with 59 or 60 cores, the orientation is as below unless indicated otherwise. #60 location is usually filled with carbon for orientation.

Shaded area	1	2	3	4	5	6	7	8	9	10
	11	12	13	14	15	16	17	18	19	20
	21	22	23	24	25	26	27	28	29	30
	30	32	33	34	35	36	37	38	39	40
	41	42	43	44	45	46	47	48	49	50
	51	52	53	54	55	56	57	58	59	60

Product Info

Amount : 1 Slide

Storage condition : Individual slide is put in an air-tight pack with inert gas. If the slides are stored at 4 degree, they are good for up to one year.

Application Note

How processed

- Tissues were initially fixed with formalin except for some of the animal tissues.
- Then, dehydrated with gradient ethanol; typically 1 hour each progressive steps; 70%, 90%, 95%, 99%, 100% x 3 times.
- Cleared by xylene, three changes for 1 hour each.
- Infiltrated with 60°
C paraffin, three changes for 1 hour each
- Sectioned by microtome in 4 micro meter thickness and put on Superfrost plus slides.

Before use

- Dry slides for 1 hour in a oven at 60 degree.

- Dewax slides in xylene for 4 minutes x 5 times.
- Hydrate slides in 100%, 95% and 75% ethanol for 3 minutes x 2 times each.
- Immerse slides in tap water for 5 minutes.

Applications

- Immunohistochemistry
- Fluorescent in situ hybridization (FISH)
- mRNA in situ hybridization
- miRNA in situ hybridization
- TUNEL for apoptosis
- Nucleic acid extraction

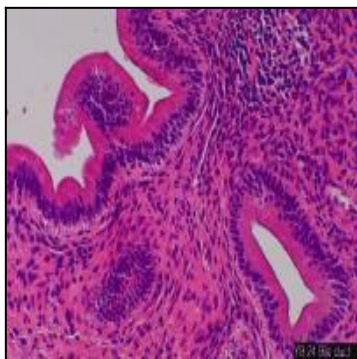


Figure-1: An example of bile duct of normal female monkey. For listing of organs in this slide, please click on Slide Info.

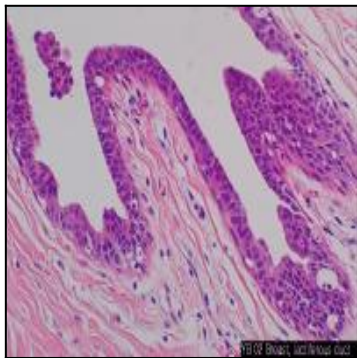


Figure-2: An example of lactiferous duct (Breast) of normal female monkey. For listing of organs in this slide, please click on Slide Info.

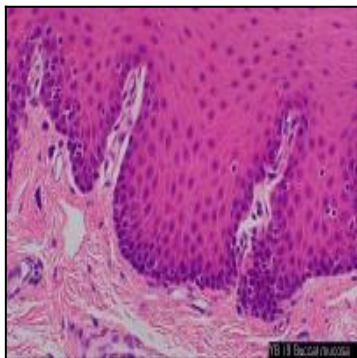


Figure-3: An example of buccal mucosa of normal female monkey. For listing of organs in this slide, please click on Slide Info.

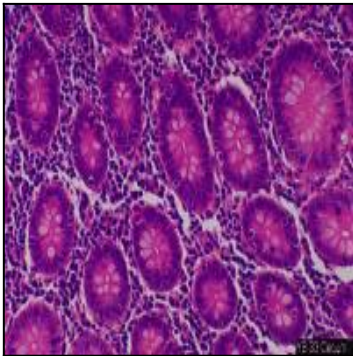


Figure-4: An example of cecum of normal female monkey. For listing of organs in this slide, please click on Slide Info.

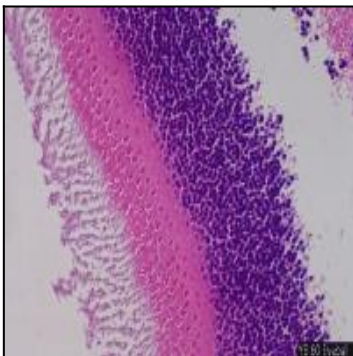


Figure-5: An example of eyeball of normal female monkey. For listing of organs in this slide, please click on Slide Info.

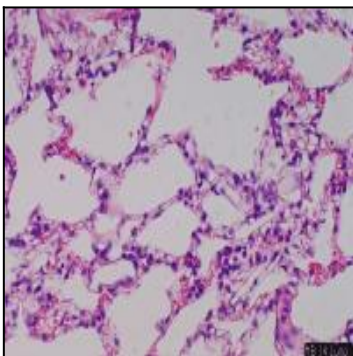


Figure-6: An example of lung of normal female monkey. For listing of organs in this slide, please click on Slide Info.

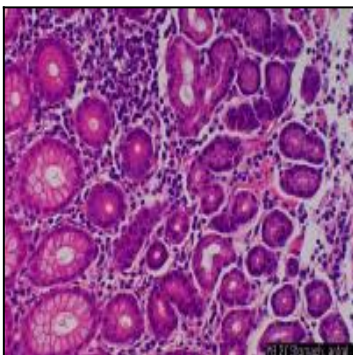


Figure-7: An example of stomach antral of normal female monkey. For listing of organs in this slide, please click on Slide Info.

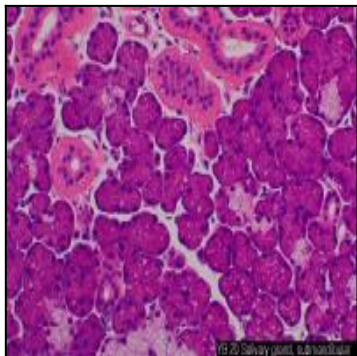


Figure-8: An example of salivary gland (submandibular) of normal female monkey. For listing of organs in this slide, please click on Slide Info.

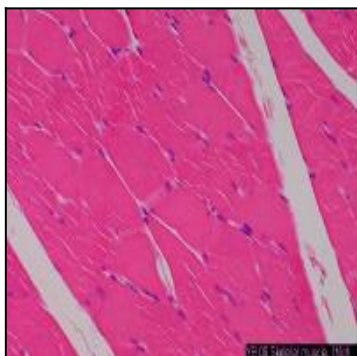


Figure-9: An example of skeletal muscle (Thigh) of normal female monkey. For listing of organs in this slide, please click on Slide Info.

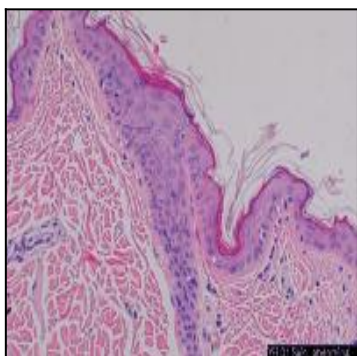


Figure-10: An example of abdominal skin of normal female monkey. For listing of organs in this slide, please click on Slide Info.