

## 11-3014: Polyclonal Antibody to DUBA

<b>Clonality :</b>	Polyclonal
<b>Application :</b>	WB
<b>Reactivity :</b>	Mouse, Human
<b>Gene :</b>	OTUD5
<b>Gene ID :</b>	55593
<b>Uniprot ID :</b>	Q96G74
<b>Format :</b>	Purified
<b>Alternative Name :</b>	OTUD5
<b>Isotype :</b>	Rabbit IgG
<b>Immunogen Information :</b>	A partial length recombinant DUBA protein (amino acids 300-520) was used as the immunogen for this antibody.

### Description

DUBA belongs to a subfamily of 14 DUBs characterized by an OTU (Ovarian Tumor) domain. This protein suppress the type I interferon-dependent innate immune response by cleaving the polyubiquitin chain from an essential type I interferon adaptor protein. Cleavage results in disassociation of the adaptor protein from a downstream signaling complex and disruption of the type I interferon signaling cascade. DUBA forms a direct complex with p53 and controls level of ubiquitination. The function of DUBA is required to allow the rapid activation of p53-dependent transcription and a p53-dependent apoptosis in response to DNA damage stress.

### Product Info

<b>Amount :</b>	25 µg / 100 µg
<b>Purification :</b>	Protein A Chromatography
<b>Content :</b>	25 µg in 50 µl/100 µg in 200 µl PBS containing 0.05% BSA and 0.05% sodium azide. Sodium azide is highly toxic.
<b>Storage condition :</b>	Store the antibody at 4°C, stable for 6 months. For long-term storage, store at -20°C. Avoid repeated freeze and thaw cycles.

### Application Note

Western blot analysis: 2-4 µg/ml

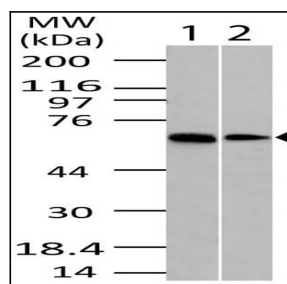


Fig-1: Western blot analysis of DUBA . Anti-DUBA antibody (11-3014) was used at 4 µg/ml on 1) Kidney and 2) 3T3 lysates.