

11-8060: Polyclonal Antibody to JMJD5

| | |
|---------------------------|-------------|
| Clonality : | Polyclonal |
| Application : | WB |
| Reactivity : | Human |
| Gene : | KDM8 |
| Gene ID : | 79831 |
| Uniprot ID : | Q8N371 |
| Format : | Purified |
| Alternative Name : | KDM8, JMJD5 |
| Isotype : | Rabbit IgG |

Immunogen Information : A partial length recombinant JMJD5 protein (amino acids 20-220) was used as the immunogen for this antibody.

Description

JMJD5 (Jumonji domain-containing protein 5) or commonly called as Lysine-specific demethylase 8 is a histone lysine demethylase that specifically demethylates dimethylated Lys 36 of histone H3 (H3K36me2) thereby activating the target gene. JMJD5 is important for G2/M phase cell cycle progression. JMJD5 is also a potential tumor suppression protein. JMJD5 helps in regulation of cancer proliferation by regulating cyclin-A1. JMJD5 has three isoforms (47, 24, 50 kDa), all localized in nucleus. JMJD5 is weakly expressed in most normal cells but highly expressed in breast cancer cells.

Product Info

| | |
|----------------------------|---|
| Amount : | 25 µg / 100 µg |
| Purification : | Protein A Chromatography |
| Content : | 25 µg in 50 µl/100 µg in 200 µl PBS containing 0.05% BSA and 0.05% sodium azide. Sodium azide is highly toxic. |
| Storage condition : | Store the antibody at 4°C, stable for 6 months. For long-term storage, store at -20°C. Avoid repeated freeze and thaw cycles. |

Application Note

Western blot analysis: 2-4 µg/ml

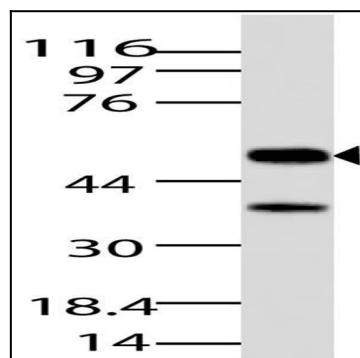


Fig-1: Western blot analysis of JMJD5. Anti-JMJD5 antibody (11-8060) was used at 4 µg/ml on Brain lysate.