

## 11-8068: Polyclonal Antibody to ASAP2

<b>Clonality :</b>	Polyclonal
<b>Application :</b>	WB
<b>Reactivity :</b>	Human
<b>Gene :</b>	ASAP2
<b>Gene ID :</b>	8853
<b>Uniprot ID :</b>	O43150
<b>Format :</b>	Purified
<b>Alternative Name :</b>	ASAP2,DDEF2,KIAA0400
<b>Isotype :</b>	Rabbit IgG
<b>Immunogen Information :</b>	A partial length recombinant ASAP2 protein (amino acids 500-760) was used as the immunogen for this antibody.

### Description

ASAP2 (Arf-GAP with SH3 domain, ANK repeat and PH domain-containing protein 2) or Development and differentiation-enhancing factor 2 (DDEF2) or Paxillin-associated protein with ARF GAP activity 3 (PAG3) is a multidomain protein containing two ANK repeats, one Arf-GAP domain, one PH domain and one SH3 domain. ASAP2 has two isoforms: PAPalpha and PAPbeta (111 and 106 kDa respectively) and both the isoforms are generally located in Golgi plasma membrane, where it colocalizes with protein tyrosine kinase 2-beta (PYK2). ASAP2 regulates ARF-mediated vesicle budding when vesicular transport. ASAP2 has high level of expression in brain, kidney, and heart.

### Product Info

<b>Amount :</b>	25 µg / 100 µg
<b>Purification :</b>	Protein A Chromatography
<b>Content :</b>	25 µg in 50 µl/100 µg in 200 µl PBS containing 0.05% BSA and 0.05% sodium azide. Sodium azide is highly toxic.
<b>Storage condition :</b>	Store the antibody at 4°C, stable for 6 months. For long-term storage, store at -20°C. Avoid repeated freeze and thaw cycles.

### Application Note

Western blot analysis: 2-4 µg/ml

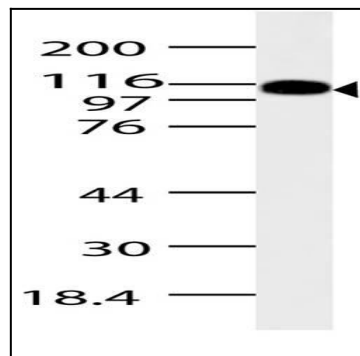


Fig-1: Western blot analysis of ASAP2. Anti-ASAP2 antibody (11-8068) was used at 4 µg/ml on Pancrease lysate.