

10-6005: Monoclonal Antibody to Ikkb (Clone: ABM10E6)

Clonality :	Monoclonal
Clone Name :	ABM10E6
Application :	WB
Reactivity :	Human
Gene :	IKBKB
Gene ID :	3551
Uniprot ID :	O14920
Format :	Purified
Alternative Name :	IKBKB,IKKB
Isotype :	Mouse IgG1 Kappa
Immunogen Information :	Full length recombinant Ikkb protein was used as the immunogen for this antibody.

Description

IKK- β also known as inhibitor of nuclear factor kappa-B kinase subunit beta is a protein which is encoded by the IKBKB (inhibitor of kappa light polypeptide gene enhancer in B-cells, kinase beta) gene. IKKB causes dissociation of the inhibitor and activation of NF-kappa-B which is activated by multiple stimuli such as inflammatory cytokines, bacterial or viral products, DNA damages or other cellular stresses. Higher expression of this protein is found in liver, kidney and spleen.

Product Info

Amount :	25 μ g / 100 μ g
Purification :	Protein G Chromatography
Content :	25 μ g in 50 μ l/100 μ g in 200 μ l PBS containing 0.05% BSA and 0.05% sodium azide. Sodium azide is highly toxic.
Storage condition :	Store the antibody at 4°C, stable for 6 months. For long-term storage, store at -20°C. Avoid repeated freeze and thaw cycles.

Application Note

Western blot analysis: 2-4 μ g/ml

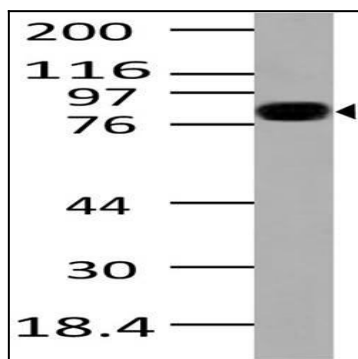


Fig-1: Western blot analysis of IKKb. Anti- IKKb antibody (Clone: ABM10E6) was used at 2 μ g/ml on Raji lysate.