

11-8082: Polyclonal Antibody to S1PR1

Clonality :	Polyclonal
Application :	WB
Reactivity :	Human
Gene :	S1PR1
Gene ID :	1901
Uniprot ID :	P21453
Format :	Purified
Alternative Name :	S1PR1,CHEDG1,EDG1
Isotype :	Rabbit IgG
Immunogen Information :	A partial length recombinant S1PR1 protein (amino acids 50-300) was used as the immunogen for this antibody.

Product Info

Amount :	25 µg / 100 µg
Purification :	Protein A Chromatography
Content :	25 µg in 50 µl/100 µg in 200 µl PBS containing 0.05% BSA and 0.05% sodium azide. Sodium azide is highly toxic.
Storage condition :	Store the antibody at 4°C, stable for 6 months. For long-term storage, store at -20°C. Avoid repeated freeze and thaw cycles.

Application Note

Western blot analysis: 2-4 µg/ml

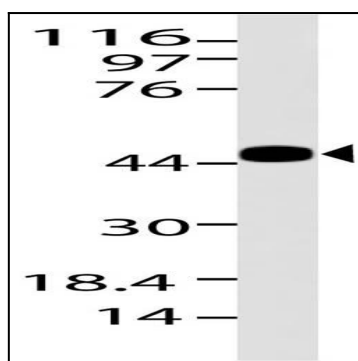


Figure-1: Western blot analysis of S1PR1. Anti-S1PR1 antibody (11-8082) was used at 4 µg/ml on Liver lysate.