

## 11-8086: Polyclonal Antibody to AP3 Delta

<b>Clonality :</b>	Polyclonal
<b>Application :</b>	WB
<b>Reactivity :</b>	Human
<b>Gene :</b>	AP3D1
<b>Gene ID :</b>	8943
<b>Uniprot ID :</b>	O14617
<b>Format :</b>	Purified
<b>Alternative Name :</b>	AP3D1,PRO0039
<b>Isotype :</b>	Rabbit IgG
<b>Immunogen Information :</b>	A partial length recombinant AP3 Delta protein (amino acids 400-680) was used as the immunogen for this antibody.

### Description

AP3D1 (AP-3 complex subunit delta-1) encodes the delta 1 subunit of an adaptor protein regulating intracellular vesicle-mediated transport (19631730). Lack of expression of functional AP-3, leads to a deficiency in vesicle transport and storage, which affects neurotransmitter vesicle turnover and release in the central nervous system (19032734). The AP-3 complex facilitates the budding of vesicles from the golgi membrane, and directly involved in trafficking to lysosomes. It is implicated in intracellular biogenesis and trafficking of pigment granules and possibly platelet dense granules and neurotransmitter vesicles.

### Product Info

<b>Amount :</b>	25 µg / 100 µg
<b>Purification :</b>	Protein A Chromatography
<b>Content :</b>	25 µg in 50 µl/100 µg in 200 µl PBS containing 0.05% BSA and 0.05% sodium azide. Sodium azide is highly toxic.
<b>Storage condition :</b>	Store the antibody at 4°C, stable for 6 months. For long-term storage, store at -20°C. Avoid repeated freeze and thaw cycles.

### Application Note

Western blot analysis: 2-4 µg/ml

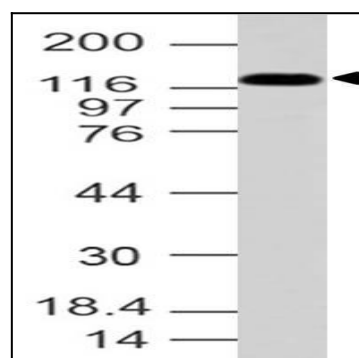


Fig-1: Western blot analysis of AP3 Delta. Anti-AP3 Delta antibody (11-8086) was used at 4 µg/ml on 293 lysate.