

## 11-4013: Polyclonal Antibody to Embigin, EMB

**Clonality :** Polyclonal

**Application :** WB

**Reactivity :** Human

**Gene :** EMB

**Gene ID :** 133418

**Uniprot ID :** Q6PCB8

**Format :** Purified

**Alternative Name :** EMB

**Isotype :** Rabbit IgG

**Immunogen Information :** A partial length recombinant Embigin, EMB protein (amino acids 100-250) was used as the immunogen for this antibody.

### Product Info

**Amount :** 25 µg / 100 µg

**Purification :** Protein A Chromatography

**Content :** 25 µg in 50 µl/100 µg in 200 µl PBS containing 0.05% BSA and 0.05% sodium azide. Sodium azide is highly toxic.

**Storage condition :** Store the antibody at 4°C, stable for 6 months. For long-term storage, store at -20°C. Avoid repeated freeze and thaw cycles.

### Application Note

Western blot analysis: 2-4 µg/ml

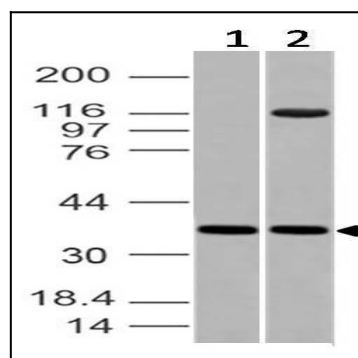


Fig-1: Western blot analysis of Embigin, EMB. Anti-Embigin, EMB antibody (11-4013) was used at 2 µg/ml on (1) PC3 and (2) Jurkat lysates.