

11-4045: Polyclonal Antibody to CLEC12A/MICL

Clonality :	Polyclonal
Application :	WB
Reactivity :	Human
Gene :	CLEC12A
Gene ID :	160364
Uniprot ID :	Q5QGZ9
Format :	Purified
Alternative Name :	CLEC12A, CLL1, DCAL2, MICL
Isotype :	Rabbit IgG
Immunogen Information :	A partial length recombinant CLEC12A/MICL protein (amino acids 150-250) was used as the immunogen for this antibody.

Product Info

Amount :	25 µg / 100 µg
Purification :	Protein A Chromatography
Content :	25 µg in 50 µl/100 µg in 200 µl PBS containing 0.05% BSA and 0.05% sodium azide. Sodium azide is highly toxic.
Storage condition :	Store the antibody at 4°C, stable for 6 months. For long-term storage, store at -20°C. Avoid repeated freeze and thaw cycles.

Application Note

Western blot analysis: 2-4 µg/ml

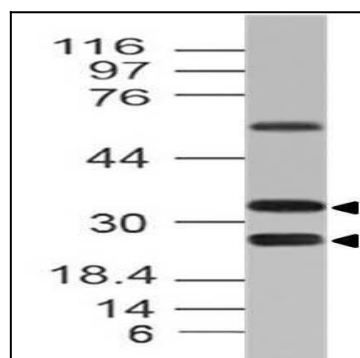


Fig-1: Western blot analysis of CLEC12A. Anti-CLEC12A antibody (11-4045) was used at 2 µg/ml on Daudi lysate.