

11-8032: Polyclonal Antibody to GPR35

Clonality :	Polyclonal
Application :	WB
Reactivity :	Mouse, Human
Gene :	GPR35
Gene ID :	2859
Uniprot ID :	Q9HC97
Format :	Purified
Alternative Name :	GPR35
Isotype :	Rabbit IgG
Immunogen Information :	A partial length recombinant GPR35 protein (amino acids 173-305) was used as the immunogen for this antibody.

Product Info

Amount :	25 µg / 100 µg
Purification :	Protein A Chromatography
Content :	25 µg in 50 µl/100 µg in 200 µl PBS containing 0.05% BSA and 0.05% sodium azide. Sodium azide is highly toxic.
Storage condition :	Store the antibody at 4°C, stable for 6 months. For long-term storage, store at -20°C. Avoid repeated freeze and thaw cycles.

Application Note

Western blot analysis: 2-4 µg/ml

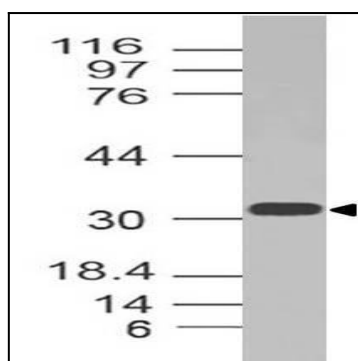


Figure-1: Western blot analysis of GPR35. Anti-GPR35 antibody (11-8032) was used at 2 µg/ml on HCT-116 lysate.

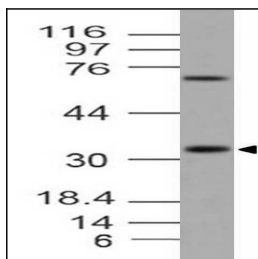


Figure-2: Western blot analysis of GPR35. Anti-GPR35 antibody (11-8032) was used at 1 µg/ml on RAW lysate.