

20-1002: Polyclonal antibody to APAF-1

Clonality :	Polyclonal
Application :	IP,IHC,WB
Reactivity :	Human
Gene :	APAF1
Gene ID :	317
Uniprot ID :	O14727
Format :	Sera
Alternative Name :	APAF1,KIAA0413
Isotype :	Rabbit IgG
Immunogen Information :	A synthetic peptide of APAF-1 protein (amino acids 264-282 GPKYVVPVESSLGKEKGLE) was used as the immunogen for this antibody

Description

Apaf 1 (apoptosis protease-activating factor-1) is a key regulator of the mitochondrial apoptotic pathway, being the central element of the multimeric apoptosome. The apoptosome consists of cytochrome c, procaspase-9 and seven Apaf 1 monomers, and is considered to be core apoptotic machinery that executes mitochondria-dependent apoptosis. Cytochrome c, normally compartmentalized in the mitochondria, is released into the cytoplasm following apoptotic stimuli. Apaf 1 binds cytochrome c in the cytoplasm and in the presence of dATP/ATP forms the apoptosome. The apoptosome binds procaspase-9 and promotes its autocatalytic activation. Active caspase-9, in turn, activates downstream caspases including 3, 6, and 7 contributing to the proteolytic caspase activation cascade which leads to cell death.

Product Info

Amount :	50 µl
Content :	50 µl sera
Storage condition :	Store the antibody at 4°C, stable for 6 months. For long-term storage, store at -20°C. Avoid repeated freeze and thaw cycles.

Application Note

WB: 1:1000-1:2000, IHC (paraffin): 1:1000-1:5000, IHC (frozen): Users should optimize, IP: 1:50-1:200

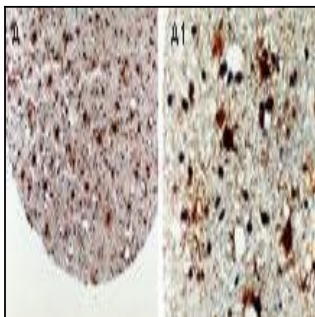


Fig:1 Formalin-fixed, paraffin-embedded tissue core of human glioma (grade II) stained for Apaf 1 expression using 20-1002 at 1:2000. A and A1. Low and high magnification, respectively Hematoxylin-eosin counterstain.

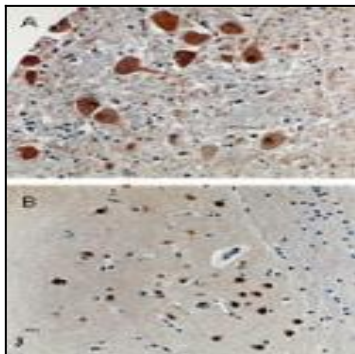


Fig:2 Formalin-fixed, paraffin-embedded human brain tissue sections stained for Apaf 1 expression using 20-1002 at 1:2000. A. Brain stem. B. Cortex. Hematoxylin-eosin counterstain.