

### 36-1036: Monoclonal Antibody to HCG-alpha (Pregnancy & Choriocarcinoma Marker)(Clone : SPM552)

<b>Clonality :</b>	Monoclonal
<b>Clone Name :</b>	SPM552
<b>Application :</b>	IHC
<b>Reactivity :</b>	Human
<b>Gene :</b>	CGA
<b>Gene ID :</b>	1081
<b>Uniprot ID :</b>	P01215
<b>Format :</b>	Purified
<b>Alternative Name :</b>	CGA
<b>Isotype :</b>	Mouse IgG1, kappa
<b>Immunogen Information :</b>	Recombinant hCG alpha protein

#### Description

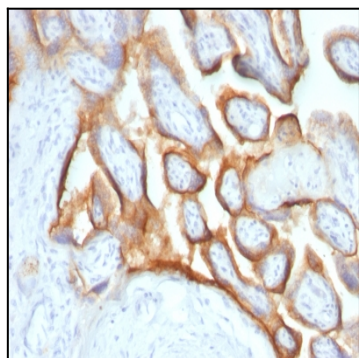
This MAb reacts with a protein of ~13kDa, identified as  $\alpha$  sub-unit of HCG. HCG is a glycoprotein, which is secreted in large quantities by normal trophoblasts. It is present only in trace amounts in non-pregnant urine and sera but rises sharply during pregnancy. HCG is composed of two non-identical, non-covalently linked polypeptide chains designated as the  $\alpha$  and  $\beta$  subunits. The  $\alpha$  subunit is identical to that of thyroid stimulating hormone (TSH), follicle stimulating hormone (FSH), and luteinizing hormone (LH).

#### Product Info

<b>Amount :</b>	100 $\mu$ g
<b>Purification :</b>	Affinity Chromatography
<b>Content :</b>	100 $\mu$ g in 500 $\mu$ l PBS containing 0.05% BSA and 0.05% sodium azide. Sodium azide is highly toxic.
<b>Storage condition :</b>	Store the antibody at 4°C; stable for 6 months. For long-term storage; store at -20°C. Avoid repeated freeze and thaw cycles.

#### Application Note

Immunohistochemistry (Formalin-fixed) (1-2 $\mu$ g/ml for 30 minutes at RT)(Staining of formalin-fixed tissues requires heating tissue sections in 10mM Tris with 1mM EDTA, pH 9.0, for 45 min at 95°C followed by cooling at RT for 20 minutes);



Formalin-fixed, paraffin-embedded human Placenta stained with hCG alpha Monoclonal Antibody (SPM552).