

10-1018: Monoclonal Antibody to ATF6 (Clone: ABM1A40)

Clonality :	Monoclonal
Clone Name :	ABM1A40
Application :	FACS, WB
Reactivity :	Human
Gene :	ATF6
Gene ID :	22926
Uniprot ID :	P18850
Format :	Purified
Alternative Name :	ATF6
Isotype :	Mouse IgG1 Kappa
Immunogen Information :	A partial length recombinant ATF6 protein (amino acids 1-400) was used as the immunogen for this antibody.

Description

ATF6, also named as Cyclic AMP-dependent transcription factor ATF-6 alpha is a member of bZIP family, ATF subfamily. ATF6 forms homodimer and heterodimer with ATF6-beta. ATF6 acts by activating specific unfolded protein response target genes during endoplasmic reticulum stress. ATF6 is a ubiquitously expressed transcription factor located at endoplasmic reticulum (ER) membrane. During ER stress an approximately 50 kDa fragment containing the N-terminal cytoplasmic domain is cleaved by proteolysis and is translocated into the nucleus. N-glycosylation may serve as a sensor for ER homeostasis. For the binding of ATF6 to ERSE, ESRE should first bind to another transcription factor called Nuclear Transcription Factor Y (NF-Y). ATF6 could also be involved in activation of transcription by interacting with serum response factor. ATF6 is a 74 kDa protein and is highly expressed in kidney, liver, colon and mammary gland.

Product Info

Amount :	25 µg / 100 µg
Purification :	Protein G Chromatography
Content :	25 µg in 50 µl/100 µg in 200 µl PBS containing 0.05% BSA and 0.05% sodium azide. Sodium azide is highly toxic.
Storage condition :	Store the antibody at 4°C, stable for 6 months. For long-term storage, store at -20°C. Avoid repeated freeze and thaw cycles.

Application Note

Western blot analysis: 2-4 µg/ml, FACS: 0.5-1 µg/10⁶ cells

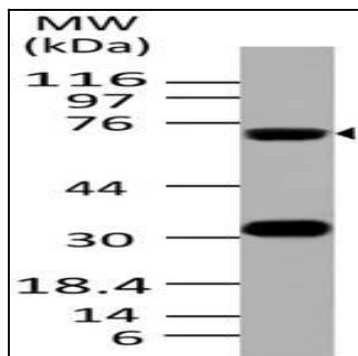


Fig-1: Expression analysis of ATF6. Anti- ATF6 antibody (Clone ABM1A40) was used at 2 µg/ml on K562 lysate.

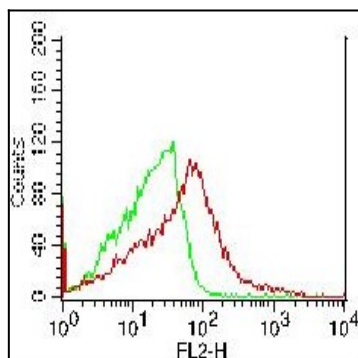


Fig-2: Intracellular staining of full length ATF6 plasmid and blank plasmid transfected HEK293 cells. 0.5 ug of anti-ATF6 antibody was used. Green represents blank plasmid, Red represents ATF6 expression plasmid. Goat anti-mouse PE was used as secondary antibody.

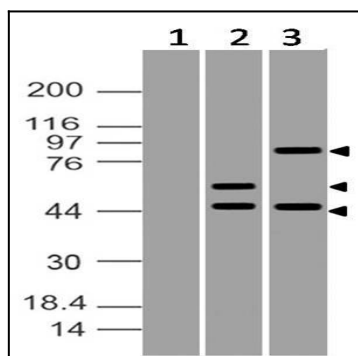


Fig-3: Expression analysis of ATF6. Anti- ATF6 antibody (Clone ABM1A40) was used at 2 µg/ml on (1) Blank plasmid transfected HEK293 cells, (2) Partial length ATF6 plasmid transfected HEK293 cells and (3) Full length ATF6 plasmid transfected HEK293 cells.