

36-1236: Monoclonal Antibody to HLA-DRB (MHC II)(Clone : HLA-DRB/1067)

Clonality :	Monoclonal
Clone Name :	HLA-DRB/1067
Application :	IHC,FACS,WB,IF
Reactivity :	Human
Gene :	HLA-DRB1
Gene ID :	3123
Uniprot ID :	P01911
Format :	Purified
Alternative Name :	HLA-DRB1,HLA-DRB2
Isotype :	Mouse IgG2b, kappa
Immunogen Information :	Activated human peripheral blood mononuclear cells

Description

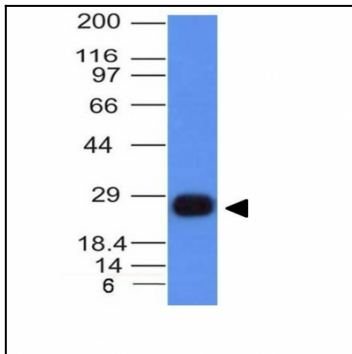
This MAbs reacts with the beta-chain of HLA-DRB1 antigen, a member of MHC class II molecules. It does not cross react with HLA-DP and HLA-DQ. Its epitope is different from that of MAbs L243. HLA-DR is a heterodimeric cell surface glycoprotein comprised of a 36kDa alpha (heavy) chain and a 28kDa beta (light) chain. It is expressed on B-cells, activated T-cells, monocytes/macrophages, dendritic cells and other non-professional APCs. In conjunction with the CD3/TCR complex and CD4 molecules, HLA-DR is critical for efficient peptide presentation to CD4+ T cells. It is an excellent histiocytic marker in paraffin sections producing intense cytoplasmic staining. True histiocytic neoplasms are similarly positive. HLA-DR antigens also occur on a variety of epithelial cells and their corresponding neoplastic counterparts. Loss of HLA-DR expression is related to tumor microenvironment and predicts adverse outcome in diffuse large B-cell lymphoma.

Product Info

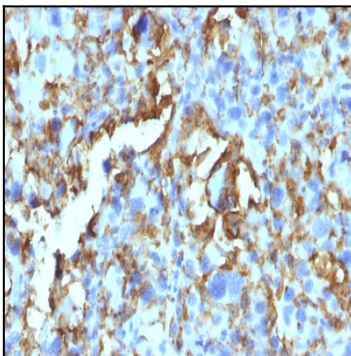
Amount :	100 µg
Purification :	Affinity Chromatography
Content :	100 µg in 500 µl PBS containing 0.05% BSA and 0.05% sodium azide. Sodium azide is highly toxic.
Storage condition :	Store the antibody at 4°C; stable for 6 months. For long-term storage; store at -20°C. Avoid repeated freeze and thaw cycles.

Application Note

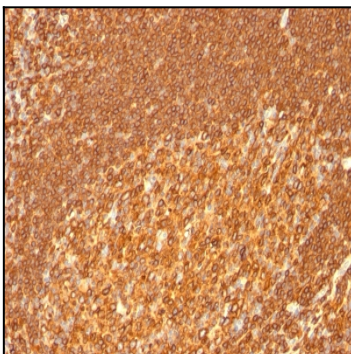
Flow Cytometry (1-2ug/million cells); Immunofluorescence (1-4ug/ml); ,Western Blot (1-2ug/ml); ,Immunohistochemistry (Formalin-fixed) (0.25-0.5ug/ml for 30 minutes at RT),(Staining of formalin-fixed tissues requires heating tissue sections in 10mM Tris with 1mM EDTA, pH 9.0, for 45 min at 95°C followed by cooling at RT for 20 minutes);



Western Blot Analysis of Ramos Cell Lysate using HLA-DRB Monoclonal Antibody (HLA-DRB/1067).



Formalin-fixed, paraffin-embedded human Histiocytoma stained with HLA-DRB Monoclonal Antibody (HLA-DRB/1067).



Formalin-fixed, paraffin-embedded human Tonsil stained with HLA-DRB Monoclonal Antibody (HLA-DRB/1067).