

### 36-1239: Monoclonal Antibody to HSP27 (Heat Shock Protein 27)(Clone : G3.1)

<b>Clonality :</b>	Monoclonal
<b>Clone Name :</b>	G3.1
<b>Application :</b>	FACS,IF,WB,IHC
<b>Reactivity :</b>	Human, Rat, Mouse
<b>Gene :</b>	HSPB1
<b>Gene ID :</b>	3315
<b>Uniprot ID :</b>	P04792
<b>Format :</b>	Purified
<b>Alternative Name :</b>	HSPB1,HSP27,HSP28
<b>Isotype :</b>	Mouse IgG1, kappa
<b>Immunogen Information :</b>	Partially purified hsp27 (earlier called 24K) protein from breast cancer MCF-7 cells.

#### Description

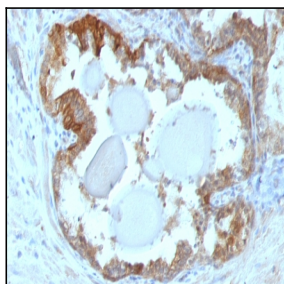
This MAbs reacts specifically with heat shock protein HSP27 in human and monkey tissues and cell lines such as MCF-7. HSP27, also referred to as the Estrogen-Regulated 24K protein and HSP28, is one of several small heat shock proteins produced by all organisms studied. HSP27 synthesis is induced by elevated temperature, as well as by estrogen in hormone responsive cells. Interestingly, human HSP27 also shares greater than 50% homology with low molecular weight Drosophila HSPs and mammalian  $\alpha$ -crystalline lens protein. Because of the estrogen responsive nature of HSP27, this protein has been studied extensively in human estrogen responsive tissues such as cervix, endometrium and breast tissue. Therefore HSP27 may be useful in classifying various hormone sensitive tumors.

#### Product Info

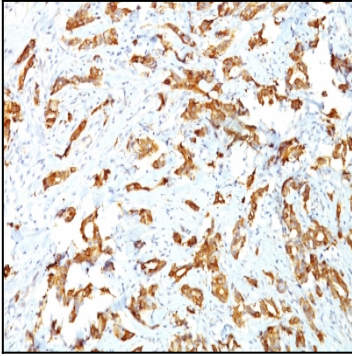
<b>Amount :</b>	100 $\mu$ g
<b>Purification :</b>	Affinity Chromatography
<b>Content :</b>	100 $\mu$ g in 500 $\mu$ l PBS containing 0.05% BSA and 0.05% sodium azide. Sodium azide is highly toxic.
<b>Storage condition :</b>	Store the antibody at 4°C; stable for 6 months. For long-term storage; store at -20°C. Avoid repeated freeze and thaw cycles.

#### Application Note

Flow Cytometry (1-2ug/million cells); Immunofluorescence (1-2ug/ml); Western Blot (1-2ug/ml); ,Immunohistochemistry (Formalin-fixed) (1-2ug/ml for 30 minutes at RT),(Staining of formalin-fixed tissues requires heating tissue sections in 10mM Tris with 1mM EDTA, pH 9.0, for 45 min at 95 &degC followed by cooling at RT for 20 minutes),



Formalin-fixed, paraffin-embedded human Prostate Carcinoma stained with HSP27 Monoclonal Antibody (G3.1)



Formalin-fixed, paraffin-embedded human Breast Carcinoma stained with HSP27 Monoclonal Antibody (G3.1)