

36-1246: Monoclonal Antibody to HSP60 (Heat Shock Protein 60) (Mitochondrial Marker)(Clone : HSPD1/780)

Clonality :	Monoclonal
Clone Name :	HSPD1/780
Application :	FACS,IF,WB,IHC
Reactivity :	Human, Mouse, Rat, Hamster
Gene :	HSPD1
Gene ID :	3329
Uniprot ID :	P10809
Format :	Purified
Alternative Name :	HSPD1,HSP60
Isotype :	Mouse IgG1, kappa
Immunogen Information :	Recombinant human HSPD1 protein

Description

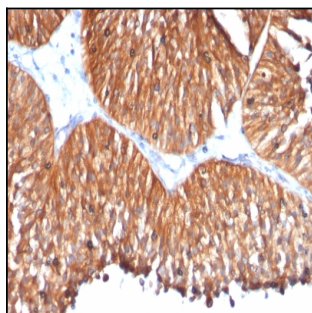
Recognizes a 60kDa protein, identified as the heat shock protein 60 (hsp60). A wide variety of environmental and pathophysiological stressful conditions trigger the synthesis of a family of proteins known as heat shock proteins (hsp?s), more appropriately called as stress response proteins (srp?s). Hsp60 is a potential antigen in a number of autoimmune diseases. In human arthritis and in experimentally induced arthritis in animals, disease development coincides with the development of immune reactivity directed against not only bacterial hsp60, but also against its mammalian homolog.

Product Info

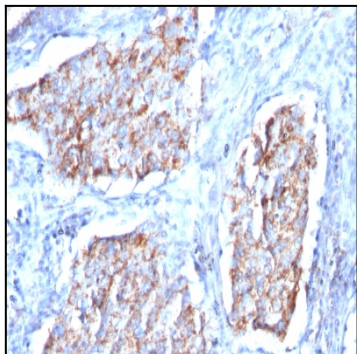
Amount :	100 µg
Purification :	Affinity Chromatography
Content :	100 µg in 500 µl PBS containing 0.05% BSA and 0.05% sodium azide. Sodium azide is highly toxic.
Storage condition :	Store the antibody at 4°C; stable for 6 months. For long-term storage; store at -20°C. Avoid repeated freeze and thaw cycles.

Application Note

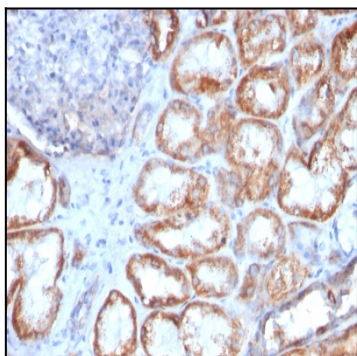
Flow Cytometry (1-2ug/million cells); Immunofluorescence (1-2ug/ml); Western Blot (1-2ug/ml); Immunohistochemistry (Formalin-fixed) (1-2ug/ml for 30 minutes at RT)(Staining of formalin-fixed tissues requires heating tissue sections in 10mM Tris with 1mM EDTA, pH 9.0, for 45 min at 95°C followed by cooling at RT for 20 minutes);



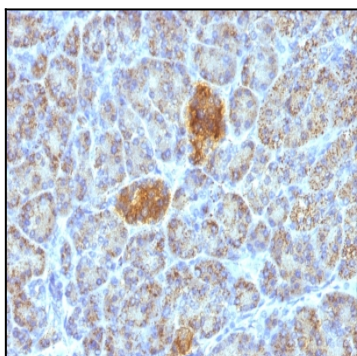
Formalin-fixed, paraffin-embedded human Bladder Carcinoma stained with HSP60 Monoclonal Antibody (HSPD1/780)



Formalin-fixed, paraffin-embedded human Lung Carcinoma stained with HSP60 Monoclonal Antibody (HSPD1/780)



Formalin-fixed, paraffin-embedded human Renal Cell Carcinoma stained with HSP60 Monoclonal Antibody (HSPD1/780)



Formalin-fixed, paraffin-embedded human Pancreas stained with HSP60 Monoclonal Antibody (HSPD1/780).