

36-1270: Monoclonal Antibody to IgG (Immunoglobulin Gamma Heavy Chain) (B-Cell Marker)(Clone : IG217)

Clonality :	Monoclonal
Clone Name :	IG217
Application :	FACS,IF,IHC
Reactivity :	Human
Gene :	IGHG1
Uniprot ID :	P01857
Format :	Purified
Alternative Name :	IGHG1
Isotype :	Mouse IgG1, kappa
Immunogen Information :	Purified human Ig Gamma Chain

Description

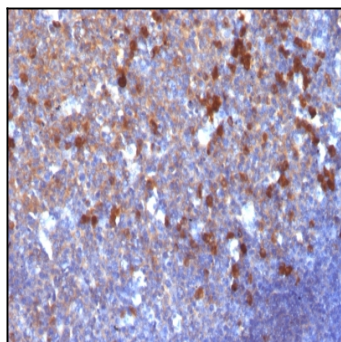
Recognizes a protein of 75kDa, identified as γ heavy chain of human immunoglobulins. It reacts with all sub-classes of γ chain of human immunoglobulins. It does not cross-react with α (IgA), μ (IgM), ϵ (IgE), or δ (IgD), heavy chains, T-cells, monocytes, granulocytes, or erythrocytes. This MAb is useful in the identification of leukemias, plasmacytomas, and certain non-Hodgkin's lymphomas. The most common feature of these malignancies is the restricted expression of a single heavy chain class. Demonstration of clonality in lymphoid infiltrates indicates that the infiltrate is clonal and therefore malignant.

Product Info

Amount :	100 μ g
Purification :	Affinity Chromatography
Content :	100 μ g in 500 μ l PBS containing 0.05% BSA and 0.05% sodium azide. Sodium azide is highly toxic.
Storage condition :	Store the antibody at 4°C; stable for 6 months. For long-term storage; store at -20°C. Avoid repeated freeze and thaw cycles.

Application Note

Flow Cytometry (1-2ug/million cells); Immunofluorescence (1-2ug/ml); Immunohistochemistry (Formalin/paraffin) (1-2ug/ml for 30 minutes at RT)(Staining of formalin-fixed tissues requires heating tissue sections in 10mM Tris with 1mM EDTA, pH 9.0, for 45 min at 95°C followed by cooling at RT for 20 minutes);



Formalin-fixed, paraffin-embedded human Tonsil stained with IgG Monoclonal Antibody (IG217)