

36-1293: Monoclonal Antibody to Lambda Light Chain (B-Cell Marker)(Clone : LcN-2)

Clonality :	Monoclonal
Clone Name :	LcN-2
Application :	FACS,IF,WB,IHC
Reactivity :	Human
Uniprot ID :	P01701
Format :	Purified
Isotype :	Mouse IgG2a, kappa
Immunogen Information :	Purified human IgG

Description

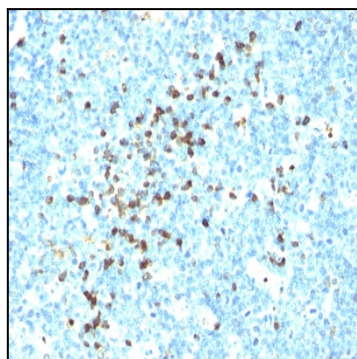
This MAAb is specific to lambda light chain of immunoglobulin and shows no cross-reaction with lambda light chain or any of the five heavy chains. In mammals, the two light chains in an antibody are always identical, with only one type of light chain, kappa or lambda. The ratio of Kappa to Lambda is 70:30. However, with the occurrence of multiple myeloma or other B-cell malignancies this ratio is disturbed. Antibody to the lambda light chain is reportedly useful in the identification of leukemias, plasmacytomas, and certain non-Hodgkin's lymphomas. Demonstration of clonality in lymphoid infiltrates indicates that the infiltrate is malignant.

Product Info

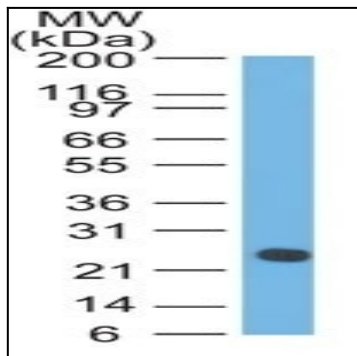
Amount :	100 µg
Purification :	Affinity Chromatography
Content :	100 µg in 500 µl PBS containing 0.05% BSA and 0.05% sodium azide. Sodium azide is highly toxic.
Storage condition :	Store the antibody at 4°C; stable for 6 months. For long-term storage; store at -20°C. Avoid repeated freeze and thaw cycles.

Application Note

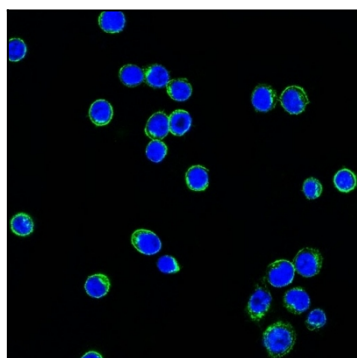
Flow Cytometry (1-2ug/million cells); Immunofluorescence (1-2ug/ml); Western Blot (1-2ug/ml); Immunohistochemistry (Formalin-fixed) (0.25-0.5ug/ml for 30 minutes at RT)(Staining of formalin-fixed tissues requires heating tissue sections in 10mM Tris with 1mM EDTA, pH 9.0, for 45 min at 95°C followed by cooling at RT for 20 minutes);



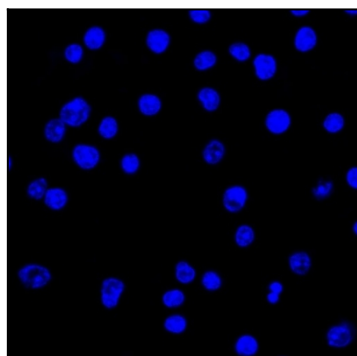
Formalin-fixed, paraffin-embedded human Tonsil stained with Lambda Light Chain Monoclonal Antibody (LcN-2).



Western Blot of human Intestinal Lysate using Lambda Light Chain Monoclonal Antibody (LcN-2).



Confocal Immunofluorescent analysis of Ramos cells using AF488-labeled Lambda Light Chain Monoclonal Antibody (LcN-2) (Green). DAPI was used to stain the cell nuclei (blue).



Confocal Immunofluorescent analysis of Ramos cells using AF488-labeled Isotype Control Monoclonal Antibody (IgG2a) (Green). DAPI was used to stain the cell nuclei (blue). (Negative Control)