

36-1340: Monoclonal Antibody to Arginase 1 (Hepatocellular Carcinoma Marker)(Clone : ARG1/1126)

Clonality :	Monoclonal
Clone Name :	ARG1/1126
Application :	WB,IHC
Reactivity :	Human
Gene :	ARG1
Gene ID :	383
Uniprot ID :	P05089
Format :	Purified
Alternative Name :	ARG1
Isotype :	Mouse IgG3, kappa
Immunogen Information :	Recombinant fragment (87 Amino acid residues around aa 1-150) of human ARG1 protein

Description

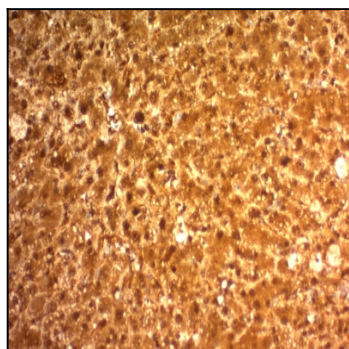
Recognizes a protein of 35-38kDa, which is identified as Arginase 1 (ARG1). Arginase is a manganese metallo-enzyme that catalyzes the hydrolysis of arginine to generate ornithine and urea. Arginase I and II are isoenzymes, which differ in subcellular localization, regulation, and possibly function. Arginase I is a cytosolic enzyme, which is expressed mainly in the liver as part of the urea cycle, whereas arginase II is a mitochondrial protein found in a variety of tissues. Antibody to ARG-1 labels hepatocytes in normal tissues and granulocytes in peripheral blood. ARG-1 is a sensitive and specific marker for identification of hepatocellular carcinoma.

Product Info

Amount :	100 µg
Purification :	Affinity Chromatography
Content :	100 µg in 500 µl PBS containing 0.05% BSA and 0.05% sodium azide. Sodium azide is highly toxic.
Storage condition :	Store the antibody at 4°C; stable for 6 months. For long-term storage; store at -20°C. Avoid repeated freeze and thaw cycles.

Application Note

Western Blot (2-4ug/ml); ,Immunohistochemistry (Formalin-fixed) (2-4ug/ml for 30 minutes at RT),(Staining of formalin-fixed tissues requires boiling tissue sections in 10mM citrate buffer, pH 6.0, for 10-20 min followed by cooling at RT for 20 minutes),



Formalin-fixed, paraffin-embedded human Hepatocellular Carcinoma stained with ARG1 Monoclonal Antibody (ARG1/1126).