

## 32-3318: Bcl-XL Recombinant Protein

**Alternative Name :** BclXL, Bcl-X(L), Bcl-XL.

### Description

Source : Escherichia Coli. Bcl-XL Human Recombinant produced in E.Coli is a single, non-glycosylated polypeptide chain containing amino acids 1-210. The Bcl-XL is purified by proprietary chromatographic techniques. Bcl-XL is a transmembrane protein located in the mitochondrial membranes of cells that are long-lived and postmitotic, such as adult brain cells. It plays a role in the signal transduction pathway of the FAS-Ligand. Bcl-XL is an anti-apoptotic protein which is a member of the Bcl-2 family which are able to form heterodimers, and this is a significant event in the regulation of apoptosis. BCL-XL is involved in the survival of cancer cells. Bcl-xL is the leading monitor of apoptosis/active cell suicide. Bcl-xL has cell death repressor activity and therefore acts as a survival protein.

### Product Info

|                            |   |
|----------------------------|---|
| <b>Amount :</b>            | 50 µg   |
| <b>Purification :</b>      | Greater than 95.0% as determined by SDS-PAGE.   |
| <b>Content :</b>           | The protein contains 10mM Tris-HCl pH-8, 1mM EDTA and 250mM NaCl.   |
| <b>Storage condition :</b> | Lyophilized Bcl-XL although stable at room temperature for 3 weeks, should be stored desiccated below -18°C. Upon reconstitution Bcl-XL should be stored at 4°C between 2-7 days and for future use below -18°C. For long term storage it is recommended to add a carrier protein (0.1% HSA or BSA). Please prevent freeze-thaw cycles. |

### Application Note

Suspend BclXL in 1000µl sterile 18M-cm H<sub>2</sub>O, over night at 4°C. Dilute 10 fold into selected buffer system. Bcl-XL has tendency to form intramolecular disulfide bond, 5mM DTT is recommended in assay buffer. When running SDS-PAGE gel, 10mM DTT is recommended.

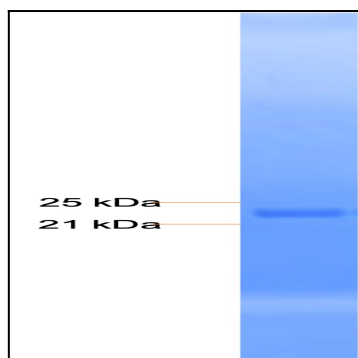


Figure 1: Coomassie Staining of Bcl\_XL Recombinant Protein with ~ 5 ug loaded.