

10-1019: Monoclonal Antibody to Caspase-8 (Clone: ABM14C1)

Clonality :	Monoclonal
Clone Name :	ABM14C1
Application :	IHC,FACS,WB
Reactivity :	Mouse,Human
Gene :	CASP8
Gene ID :	841
Uniprot ID :	Q14790
Format :	Purified
Alternative Name :	Apoptotic cysteine protease, Apoptotic protease Mch-5, FADD-homologous ICE/ced-3-like protease, CE-like apoptotic protease 5
Isotype :	Mouse IgG1
Immunogen Information :	A partial length recombinant protein (a.a 179-385) of Caspase-8 was used as the immunogen for this antibody.

Description

Apoptosis occurs during normal cellular development and involves dramatic changes in cellular structure. Disruption of apoptosis may contribute to cancer as well as other autoimmune diseases. Caspase family of cysteine proteases has been shown to play a key role in apoptosis. Caspase-8 is a 55 kDa cytosolic protein that is synthesized as an inactive pro-enzyme. Activation of caspase-8 involves a two-step proteolysis: the cleavage of caspase-8 to generate a 43 and a 12 kDa fragment which is further processed to 10 kDa. The p43 is then cleaved to yield p26 and the release of the active site containing p18. The Active/Cleaved Caspase-8 polyclonal antisera recognizes the large and small subunits of active/cleaved caspase-8. Whereas the antisera has a strong preference for active/cleaved caspase-8, in some cell or tissue systems or techniques the antisera may also recognize the proform of caspase-8 as well as intermediate caspase-8 cleavage fragments.

Product Info

Amount :	25 µg / 100 µg
Purification :	Protein G Chromatography
Content :	25 µg in 50 µl/100 µg in 200 µl PBS containing 0.05% BSA and 0.05% sodium azide. Sodium azide is highly toxic.
Storage condition :	Store the antibody at 4°C, stable for 6 months. For long-term storage, store at -20°C. Avoid repeated freeze and thaw cycles.

Application Note

WB: 4-6 µg/ml, FACS: 0.5-1 µg/10⁶, IHC: 5-10 µg/ml

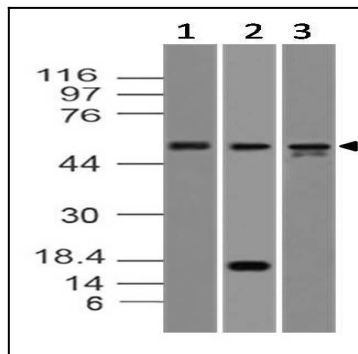


Fig-1: Western blot analysis of Caspase-8. Anti-Caspase-8 antibody (Clone: ABM14C1) was used at 2 µg/ml on Molt-4, Kato III and HepG2 lysates.

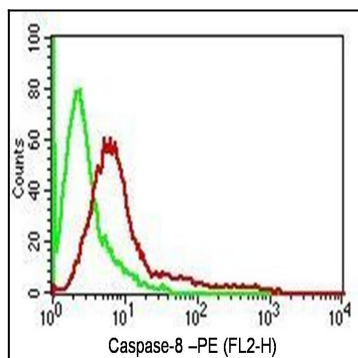


Fig-2: Intracellular Flow analysis of Caspase-8 antibody in HeLa cells using 0.5 µg/ 10⁶ cells of anti-Caspase-8 antibody (ABM14C1). Green represents isotype control; red represents anti-Caspase-8 antibody. Goat anti-mouse PE conjugate was used as secondary antibody. (Cells were fixed with 4% paraformaldehyde for 10 min and washed with PBS by centrifuging at 1100 for 5 min followed by permeabilization for 20 min and washed again as mentioned above. Then cell were incubated with primary antibody for 45 min. and after washing the cells twice in PBS, incubated with conjugated secondary antibody for 30 min. Data acquisition was done after washing twice with PBS as mentioned above).

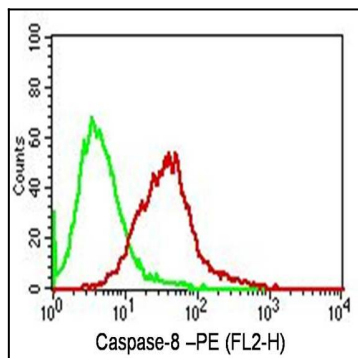


Fig-3: Intracellular Flow analysis of Caspase-8 antibody in Jurkat cells using 0.5 µg/ 10⁶ cells of anti-Caspase-8 antibody (ABM14C1). Green represents isotype control; red represents anti-Caspase-8 antibody. Goat anti-mouse PE conjugate was used as secondary antibody. (Cells were fixed with 4% paraformaldehyde for 10 min and washed with PBS by centrifuging at 1100 for 5 min followed by permeabilization for 20 min and washed again as mentioned above. Then cell were incubated with primary antibody for 45 min. and after washing the cells twice in PBS, incubated with conjugated secondary antibody for 30 min. Data acquisition was done after washing twice with PBS as mentioned above).

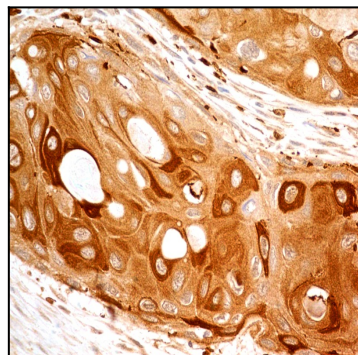


Fig-4: Immunohistochemical analysis of Caspase-8 in human Esophagus using anti-Caspase-8 antibody (Clone: ABM14C1) at 5 µg/ml.

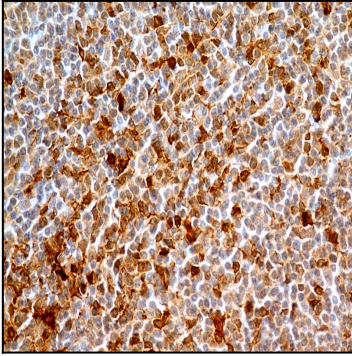


Fig-5: Immunohistochemical analysis of Caspase-8 in human Tonsil using anti-Caspase-8 antibody (Clone: ABM14C1) at 5 µg/ml.

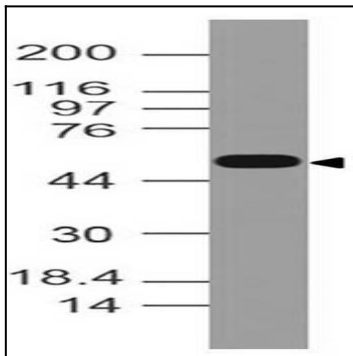


Figure-6: Western blot analysis of Caspase-8. Anti-Caspase-8 antibody (Clone: ABM14C1) was used at 4 µg/ml on EL-4 lysate.