

## 10-1058: Monoclonal Antibody to 14-3-3 Theta (Clone: ABM52H6)

<b>Clonality :</b>	Monoclonal
<b>Clone Name :</b>	ABM52H6
<b>Application :</b>	WB
<b>Reactivity :</b>	Mouse
<b>Gene :</b>	Ywhaq
<b>Gene ID :</b>	22630
<b>Uniprot ID :</b>	P68254
<b>Format :</b>	Purified
<b>Alternative Name :</b>	14-3-3 protein tau
<b>Isotype :</b>	Rat IgG2a, kappa
<b>Immunogen Information :</b>	Full length recombinant protein of 14-3-3 Theta was used as the immunogen for this antibody.

### Description

14-3-3 Theta, a member of 14-3-3 family, is an adapter protein that plays an important role in a wide range of vital regulatory processes, including signal transduction, apoptosis, cell cycle progression and DNA replication. Humans have seven 14-3-3 isoforms (beta, gamma, epsilon, eta, sigma, theta and zeta) that serve as scaffolds to promote interactions of regulatory phospho-proteins involved in many vital cellular processes. 14-3-3 Theta binds to a large number of partners, usually by recognition of a phosphoserine or phosphothreonine motif, resulting in the modulation of the activity of the binding partner except PDPK1, whose kinase activity is negatively regulated. Previous studies have shown that disturbances in native 14-3-3 levels can contribute significantly to the development of various cancers. In lung cancer biopsies, 14-3-3 Theta is found to be present in abundance.

### Product Info

<b>Amount :</b>	25 µg / 100 µg
<b>Purification :</b>	Protein G Chromatography
<b>Content :</b>	25 µg in 50 µl/100 µg in 200 µl PBS containing 0.05% BSA and 0.05% sodium azide. Sodium azide is highly toxic.
<b>Storage condition :</b>	Store the antibody at 4°C, stable for 6 months. For long-term storage, store at -20°C. Avoid repeated freeze and thaw cycles.

### Application Note

WB: 2-4 µg/ml

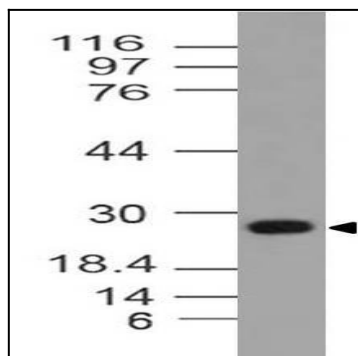


Fig-1: Western blot analysis of 14-3-3 Theta. Anti-14-3-3 Theta antibody (Clone: ABM52H6) was used at 2 µg/ml on mBrain lysate.